

Product datasheet for **TA302007S**

Noelin (OLFM1) Rabbit Polyclonal Antibody

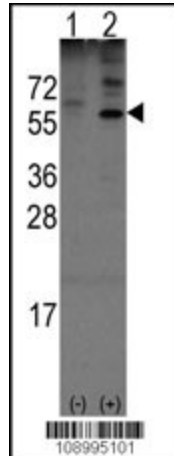
Product data:

Product Type:	Primary Antibodies
Applications:	IHC, WB
Recommended Dilution:	WB: 1:1000, IHC: 1:10~50
Reactivity:	Human (Predicted: Mouse, Rat, Chicken)
Host:	Rabbit
Isotype:	Ig
Clonality:	Polyclonal
Immunogen:	This Olfm1 antibody is generated from rabbits immunized with a KLH conjugated synthetic peptide between 71-100 amino acids from the N-terminal region of human Olfm1.
Formulation:	Purified polyclonal antibody supplied in PBS with 0.09% (W/V) sodium azide.
Concentration:	lot specific
Purification:	This antibody is purified through a protein G column, followed by dialysis against PBS.
Conjugation:	Unconjugated
Storage:	Store at -20°C as received.
Stability:	Stable for 12 months from date of receipt.
Predicted Protein Size:	55401 Da
Gene Name:	olfactomedin 1
Database Link:	NP_055094 Entrez Gene 56177 Mouse Entrez Gene 93667 Rat Entrez Gene 10439 Human Q99784
Background:	Olfm1 shares extensive sequence similarity with the rat neuronal olfactomedin-related ER localized protein. While the exact function of this protein is not known, its abundant expression in brain suggests that it may have an essential role in nerve tissue.
Synonyms:	AMY; NOE1; NOELIN1; OlfA
Protein Families:	Druggable Genome

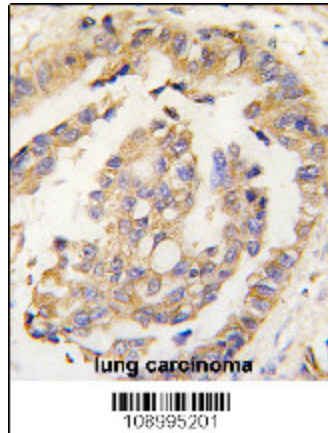


[View online »](#)

Product images:



Western blot analysis of Noelin-1 (Olfm1) (arrow) using rabbit polyclonal Noelin-1 (Olfm1) Antibody (N-term) (Cat.#[TA302007]).



Formalin-fixed and paraffin-embedded human lung carcinoma tissue reacted with Olfm1 Antibody (N-term) (Cat.#[TA302007]), which was peroxidase-conjugated to the secondary antibody, followed by DAB staining. This data demonstrates the use of this antibody for immunohistochemistry; clinical relevance has not been evaluated.