

Product datasheet for **TA302005S**

HSP70-1A (HSPA1A) Rabbit Polyclonal Antibody

Product data:

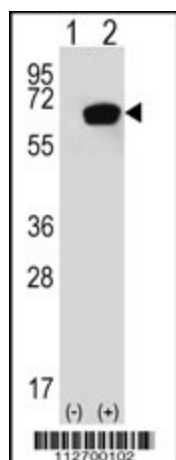
Product Type:	Primary Antibodies
Applications:	WB
Recommended Dilution:	WB: 1:1000
Reactivity:	Human (Predicted: Mouse, Rat, Zebrafish, Bovine, Chicken, Drosophila, Hamster, Pig, Monkey, Xenopus, Yeast, C. elegans)
Host:	Rabbit
Isotype:	Ig
Clonality:	Polyclonal
Immunogen:	This HSPA1A/HSPA1B antibody is generated from rabbits immunized with a KLH conjugated synthetic peptide between 19-48 amino acids from human HSPA1A/HSPA1B.
Formulation:	Purified polyclonal antibody supplied in PBS with 0.09% (W/V) sodium azide.
Concentration:	lot specific
Purification:	This antibody is purified through a protein A column, followed by peptide affinity purification.
Conjugation:	Unconjugated
Storage:	Store at -20°C as received.
Stability:	Stable for 12 months from date of receipt.
Predicted Protein Size:	70052 Da
Gene Name:	heat shock protein family A (Hsp70) member 1A
Database Link:	NP_005336 Entrez Gene 24472 Rat Entrez Gene 193740 Mouse Entrez Gene 3303 Human P0DMV8
Background:	HSPA1A is a member of the heat shock protein 70 family. In conjunction with other heat shock proteins, this protein stabilizes existing proteins against aggregation and mediates the folding of newly translated proteins in the cytosol and in organelles. It is also involved in the ubiquitin-proteasome pathway through interaction with the AU-rich element RNA-binding protein 1.
Synonyms:	HEL-S-103; HSP70-1; HSP70-1A; HSP70.1; HSP70I; HSP72; HSPA1



[View online »](#)

Protein Pathways: Antigen processing and presentation, Endocytosis, MAPK signaling pathway, Prion diseases, Spliceosome

Product images:



Western blot analysis of HSPA1A (arrow) using rabbit polyclonal HSPA1A Antibody (S41) (Cat.# [TA302005]).