

## Product datasheet for **TA302003**

### SWAP70 Rabbit Polyclonal Antibody

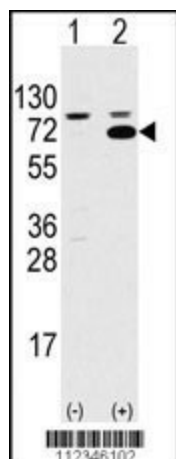
#### Product data:

Product Type:	Primary Antibodies
Applications:	WB
Recommended Dilution:	WB: 1:1000
Reactivity:	Human (Predicted: Mouse, Bovine)
Host:	Rabbit
Isotype:	Ig
Clonality:	Polyclonal
Immunogen:	This SWAP70 antibody is generated from rabbits immunized with a KLH conjugated synthetic peptide between 227-256 amino acids from the Central region of human SWAP70.
Formulation:	Purified polyclonal antibody supplied in PBS with 0.09% (W/V) sodium azide.
Concentration:	lot specific
Purification:	This antibody is prepared by Saturated Ammonium Sulfate (SAS) precipitation followed by dialysis against PBS.
Conjugation:	Unconjugated
Storage:	Store at -20°C as received.
Stability:	Stable for 12 months from date of receipt.
Predicted Protein Size:	68998 Da
Gene Name:	SWAP switching B-cell complex 70kDa subunit
Database Link:	<a href="#">NP_055870</a> <a href="#">Entrez Gene 20947 Mouse</a> <a href="#">Entrez Gene 23075 Human</a> <a href="#">Q9UH65</a>
Background:	SWAP70 is a phosphatidylinositol 3,4,5-trisphosphate-dependent guanine nucleotide exchange factor (GEF) which, independently of RAS, transduces signals from tyrosine kinase receptors to RAC. It also mediates signaling of membrane ruffling. This protein regulates the actin cytoskeleton as an effector or adapter protein in response to agonist stimulated phosphatidylinositol (3,4)-bisphosphate production and cell protrusion.
Synonyms:	HSPC321; SWAP-70

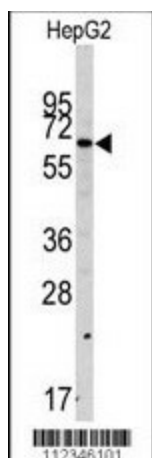


[View online »](#)

## Product images:



Western blot analysis of SWAP70 (arrow) using rabbit polyclonal SWAP70 Antibody (Center) (Cat# TA302003). 293 cell lysates (2 ug/lane) either nontransfected (Lane 1) or transiently transfected with the SWAP70 gene (Lane 2) (Origene Technologies).



Western blot analysis of anti-SWAP70 Antibody (Center) (Cat# TA302003) in HepG2 cell line lysates (35ug/lane). SWAP70 (arrow) was detected using the purified polyclonal antibody.