

## Product datasheet for **TA301771**

### LOX Rabbit Polyclonal Antibody

#### Product data:

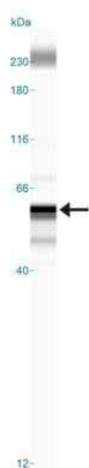
Product Type:	Primary Antibodies
Applications:	ICC/IF, IHC, Simple Western, WB
Recommended Dilution:	Immunohistochemistry: 1:200, Simple Western: 1:100, Immunocytochemistry/ Immunofluorescence: 1:100, Western Blot: 1:500-1:1000, Immunohistochemistry-Paraffin: 1:200
Reactivity:	Human, Mouse, Rat, Porcine, Cow
Host:	Rabbit
Isotype:	IgG
Clonality:	Polyclonal
Immunogen:	A cocktail of two synthetic peptides; one made to a region of the human LOX protein within residues 300-400 and one within residues 200-300
Formulation:	Tris-glycine, 150mM NaCl and 0.02% sodium azide
Purification:	Affinity purified
Conjugation:	Unconjugated
Storage:	Store at -20°C as received.
Stability:	Stable for 12 months from date of receipt.
Gene Name:	lysyl oxidase
Database Link:	<a href="#">NP_002308</a> <a href="#">Entrez Gene 16948 Mouse</a> <a href="#">Entrez Gene 24914 Rat</a> <a href="#">Entrez Gene 4015 Human</a> <a href="#">P28300</a>
Background:	Lysyl oxidase (LOX), a copper-containing amine oxidase, belongs to a heterogeneous family of enzymes that oxidize primary amine substrates to reactive aldehydes. It plays a vital role in the formation and repair of the extracellular matrix. In addition, LOX is a multifunctional enzyme having diverse biological functions such as developmental regulation, tumor suppression, cell motility, and cellular senescence. The secreted form of LOX is responsible for the invasive properties of hypoxic human cancer cells. Thus, it is essential for hypoxia- induced metastasis and is a good therapeutic target for preventing and treating metastases.
Synonyms:	MGC105112



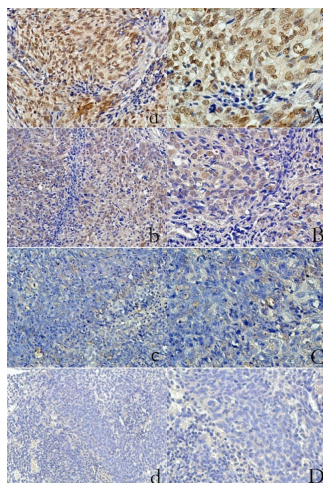
[View online »](#)

Protein Families: Druggable Genome, Secreted Protein

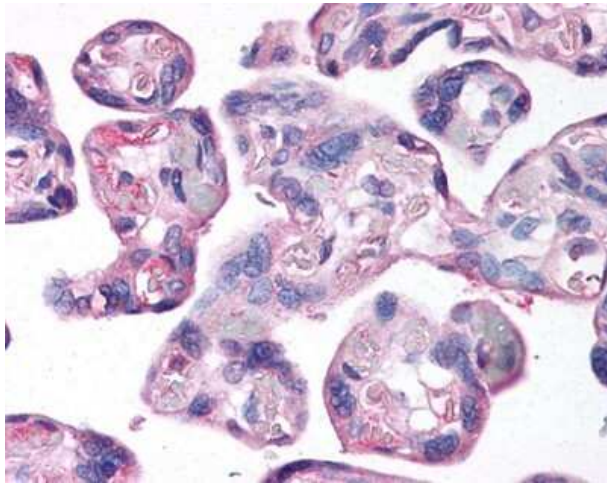
### Product images:



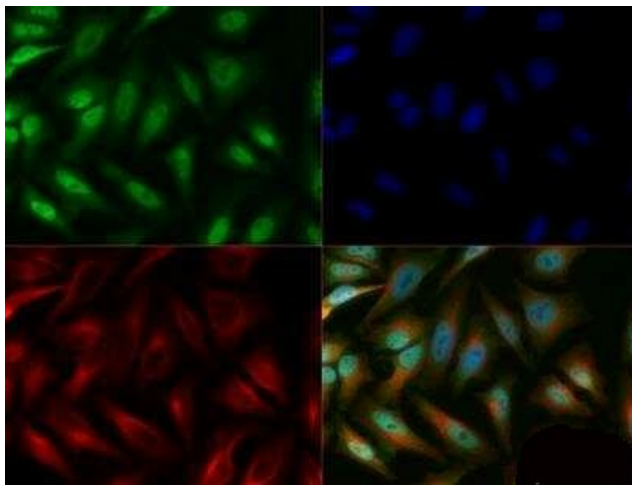
Simple Western: LOX Antibody TA301771 - Simple Western lane view shows a specific band for LOX in 0.5 mg/ml of HeLa lysate. This experiment was performed under reducing conditions using the 12-230 kDa separation system.



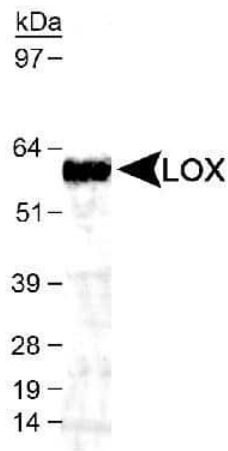
Expression of LOX in primary nasopharyngeal carcinoma (IHC staining) Strong expression(a) magnification,  $\times 200$ ; (A) magnification,  $\times 400$ ; Moderate expression: (b) magnification,  $\times 200$ ; (B) magnification,  $\times 400$ ; Weak expression: (c) magnification,  $\times 200$ ; (C) magnification,  $\times 400$ ; Negative: (d) magnification,  $\times 200$ ; (D) magnification,  $\times 400$ .



Immunohistochemistry: LOX Antibody TA301771 - Human placental villi, 40X. Staining of placental trophoblasts using TA301771 at 10 ug/ml.



Immunocytochemistry/Immunofluorescence: LOX Antibody TA301771 - HeLa cells were fixed for 10 minutes using 10% formalin and then permeabilized for 5 minutes using 1X TBS + 0.5% Triton-X100. The cells were incubated with anti-LOX TA301771 at a 1:100 dilution overnight at 4C and detected with an anti-rabbit Dylight 488 (Green) at a 1:500 dilution. Alpha tubulin (DM1A) NB100-690 was used as a co-stain at a 1:1000 dilution and detected with an anti-mouse Dylight 550 (Red) at a 1:500 dilution. Nuclei were counterstained with DAPI (Blue). Cells were imaged using a 40X objective.



Western Blot: LOX Antibody TA301771 - Detection of LOX in mouse kidney lysate using NB 100-2530 (1:1,000). ECL detection was 15 sec.