

## Product datasheet for **TA301769**

### Rad9 (RAD9A) Rabbit Polyclonal Antibody

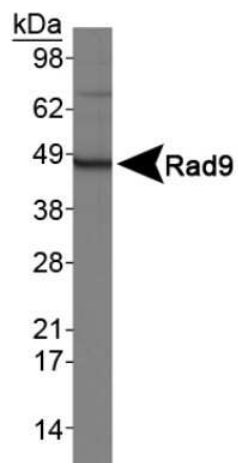
#### Product data:

Product Type:	Primary Antibodies
Applications:	ICC/IF, WB
Recommended Dilution:	Immunocytochemistry/ Immunofluorescence: 1:500, Western Blot: 1:100
Reactivity:	Human
Host:	Rabbit
Isotype:	IgG
Clonality:	Polyclonal
Immunogen:	Fusion protein of full length human Rad9 protein
Formulation:	Tris-glycine, 150 mM NaCl, 0.1% sodium azide
Purification:	Protein G purified
Conjugation:	Unconjugated
Storage:	Store at -20°C as received.
Stability:	Stable for 12 months from date of receipt.
Gene Name:	RAD9 checkpoint clamp component A
Database Link:	<a href="#">NP_004575</a> <a href="#">Entrez Gene 5883 Human Q99638</a>
Background:	Human Rad9 is a homologue of Schizosaccharomyces pombe Rad9 protein and plays a critical role in cell cycle checkpoint control.
Synonyms:	RAD9
Protein Families:	Druggable Genome, Stem cell - Pluripotency



[View online »](#)

## Product images:



Western Blot: Rad9 Antibody TA301769 - Analysis of Rad9 on HeLa whole cell extracts using TA301769.