

Product datasheet for **TA301767**

MRE11 Rabbit Polyclonal Antibody

Product data:

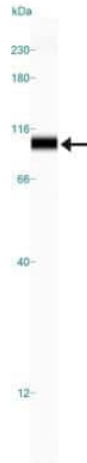
Product Type:	Primary Antibodies
Applications:	ChIP, ELISA, FC, ICC/IF, IHC, Immunoblotting, IP, Simple Western, WB
Recommended Dilution:	Chromatin Immunoprecipitation (ChIP), Knockdown Validated, Proximity Ligation Assay, Immunocytochemistry/ Immunofluorescence: 1:200, Immunohistochemistry-Paraffin: 1:10 - 1:500, Immunohistochemistry: 1:10 - 1:500, Simple Western: 1:250, Western Blot: 1:5000, Immunoprecipitation: 3 uL, Flow Cytometry, Immunoblotting, Immunohistochemistry-Frozen, Knockout Validated, ELISA
Reactivity:	Human, Mouse
Host:	Rabbit
Isotype:	IgG
Clonality:	Polyclonal
Immunogen:	Full length human Mre11 protein
Formulation:	Sodium azide
Purification:	Affinity purified
Conjugation:	Unconjugated
Storage:	Store at -20°C as received.
Stability:	Stable for 12 months from date of receipt.
Gene Name:	MRE11 homolog A, double strand break repair nuclease
Database Link:	NP_005582 Entrez Gene 17535 Mouse Entrez Gene 4361 Human P49959

Background: The hMre11-hRad50-NBS1 protein plays a central role in the human cellular DNA-Damage response, with recent studies indicating that these proteins help link DNA-damage detection to DNA-repair and cell cycle-checkpoint functions. This protein complex has been implicated in the activation of cell cycle-regulatory pathways, due to the fact that the NBS1 gene mutates in the chromosomal-instability syndrome, Nijmegen breakdown syndrome (NBS), which is characterized by increased cancer incidence, cell cycle checkpoint defects, and ionizing radiation sensitivity.

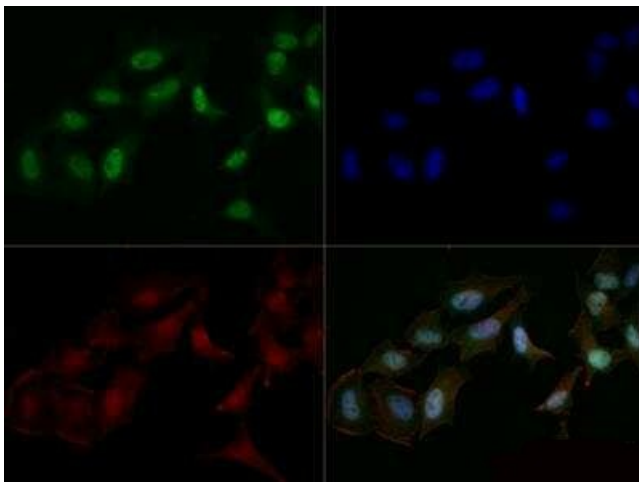


[View online »](#)

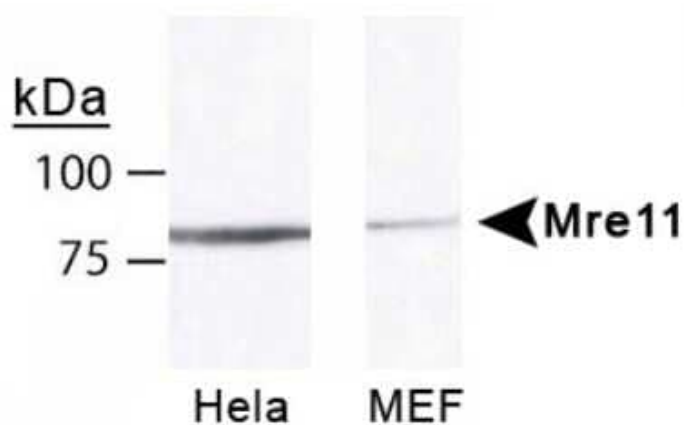
Synonyms:	ATLD; HNGS1; MRE11; MRE11B
Protein Families:	Druggable Genome, Stem cell - Pluripotency
Protein Pathways:	Homologous recombination, Non-homologous end-joining

Product images:

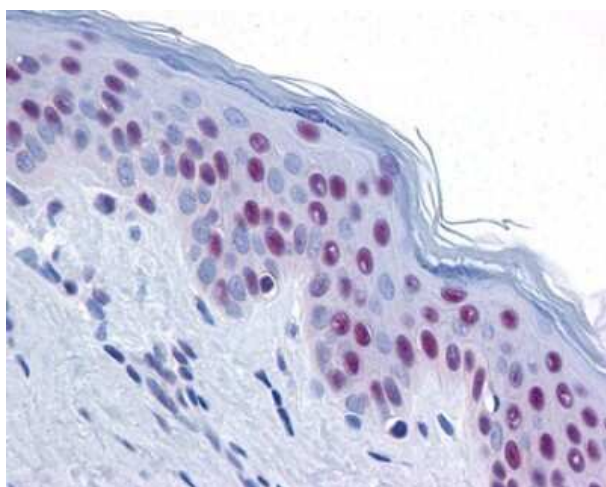
Simple Western: Mre11 Antibody TA301767 - Image shows a specific band for Mre11 in 0.5 mg/mL of HeLa lysate. A band appears at the theoretical molecular weight of 81 kDa for this product. This experiment was performed under reducing conditions using the 12-230 kDa separation system.



Immunocytochemistry/Immunofluorescence: Mre11 Antibody TA301767 - HeLa cells were fixed for 10 minutes using 10% formalin and then permeabilized for 5 minutes using 1X TBS + 0.5% Triton X-100. The cells were incubated with anti-Mre11 TA301767 at a 1:500 dilution overnight at 4C and detected with an anti-rabbit DyLight 488 (Green) at a 1:500 dilution. Actin was detected with Phalloidin 568 (Red) at a 1:200 dilution. Nuclei were counterstained with DAPI (Blue). Cells were imaged using a 40X objective.



Western Blot: Mre11 Antibody TA301767 - Western blot analysis of Mre11 on 50 ug of HeLa and MEF lysates, displaying bands at the molecular weight of 81 kDa.



Immunohistochemistry: Mre11 Antibody TA301767 - Immunohistochemical staining of MRE11 in a human epidermis cross section.