

Product datasheet for **TA301766**

BMAL1 (ARNTL) Rabbit Polyclonal Antibody

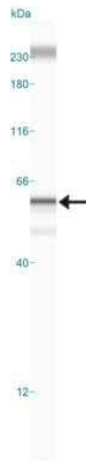
Product data:

Product Type:	Primary Antibodies
Applications:	ChIP, Simple Western, WB
Recommended Dilution:	Western Blot: 1:100 - 1:200, Simple Western: 1:100, Chromatin Immunoprecipitation (ChIP): 1:10-1:500
Reactivity:	Human
Host:	Rabbit
Isotype:	IgG
Clonality:	Polyclonal
Immunogen:	Bacterially expressed human BMAL1
Purification:	Affinity purified
Conjugation:	Unconjugated
Storage:	Store at -20°C as received.
Stability:	Stable for 12 months from date of receipt.
Gene Name:	aryl hydrocarbon receptor nuclear translocator like
Database Link:	NP_001169 Entrez Gene 406 Human O00327
Background:	MOP3 (BMAL1), a general dimerization partner for a subset of the bHLH-PAS (basic-helix-loop-helix-PER-ARNT-SIM) superfamily of transcription regulators, is involved in circadian rhythm generation. MOP3 interacts with MOP4, CLOCK, Hypoxia-inducible factor-1 alpha and -2 alpha. This interaction appears to be distinct from that of the more characterized general partner, ARNT (HIF-1Beta).
Synonyms:	bHLHe5; BMAL1; BMAL1c; JAP3; MOP3; PASD3; TIC
Protein Families:	Druggable Genome, Transcription Factors
Protein Pathways:	Circadian rhythm - mammal

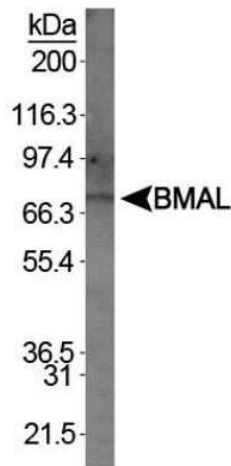


[View online »](#)

Product images:



Simple Western: BMAL1 Antibody TA301766 - Image shows a specific band for BMAL1 in 0.5 mg/mL of NIH-3T3 lysate. This experiment was performed under reducing conditions using the 12-230 kDa separation system.



Western Blot: BMAL1 Antibody TA301766 - Detection of BMAL in 3T3/L1 lysates.