

## Product datasheet for **TA301761**

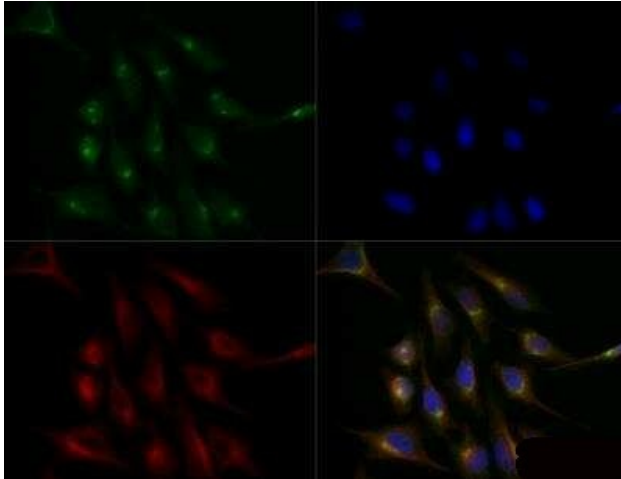
### ATP7B Rabbit Polyclonal Antibody

#### Product data:

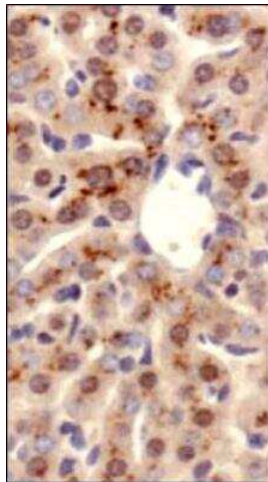
Product Type:	Primary Antibodies
Applications:	ICC/IF, IHC, Immunoblotting, IP, WB
Recommended Dilution:	Immunocytochemistry/ Immunofluorescence: 2 - 10 ug/mL, Immunohistochemistry: 1:100 - 1:500, Immunohistochemistry-Paraffin: 1:100 - 1:500, Immunoprecipitation, Western Blot: 1:1000, Immunoblotting
Reactivity:	Human, Mouse
Host:	Rabbit
Isotype:	IgG
Clonality:	Polyclonal
Immunogen:	A synthetic peptide made to an internal sequence near the N-terminus of human ATP7b.
Formulation:	Tris citrate/phosphate [pH 7-8] and 0.1% sodium azide
Concentration:	lot specific
Purification:	Affinity purified
Conjugation:	Unconjugated
Storage:	Store at -20°C as received.
Stability:	Stable for 12 months from date of receipt.
Gene Name:	ATPase copper transporting beta
Database Link:	<a href="#">NP_000044</a> <a href="#">Entrez Gene 11979 Mouse</a> <a href="#">Entrez Gene 540 Human</a> <a href="#">P35670</a>
Background:	ATP7b is an important protein for copper transport and elimination of excess copper from the body. ATP7b transports metals in and out of cells using ATP. There are 3 known isoforms of the ATP7b gene; A is found in the liver, kidney, and brain, the shorter form B is found in brain tissue, and the third isoform, known as WND/140 KDA is found in mitochondria. Mutations in the ATP7b gene can cause Wilson's disease, an inherited disorder causing copper poisoning in the brain and liver.
Synonyms:	PWD; WC1; WD; WND
Protein Families:	Druggable Genome, Transmembrane



[View online »](#)

**Product images:**


Immunocytochemistry/Immunofluorescence: ATP7b Antibody TA301761 - HeLa cells were fixed for 10 minutes using 10% formalin and then permeabilized for 5 minutes using 1X TBS + 0.5% Triton X-100. The cells were incubated with anti-ATP7b TA301761 at a 1:100 dilution overnight at 4C and detected with an anti-rabbit DyLight 488 (Green) at a 1:500 dilution. Alpha tubulin (DM1A) NB100-690 was used as a co-stain at a 1:1000 dilution and detected with an anti-mouse DyLight 550 (Red) at 1:500. Nuclei were counterstained with DAPI (Blue). Cells were imaged using a 40X objective.



Immunohistochemistry: ATP7b Antibody TA301761 - Analysis of ATP7b in mouse liver using DAB with hematoxylin counterstain.



Western Blot: ATP7b Antibody TA301761 - ATP7b detected in 20 ug of mouse brain membrane fraction.