

## Product datasheet for **TA301750**

### VEGFA Rabbit Polyclonal Antibody

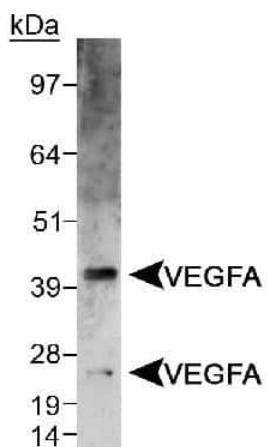
#### Product data:

Product Type:	Primary Antibodies
Applications:	ELISA, WB
Recommended Dilution:	ELISA: 1:500, Western Blot: 1 ug/mL
Reactivity:	Human, Mouse, Dog, Horse, Cow, Rat, Chicken, Guinea Pig
Host:	Rabbit
Isotype:	IgG
Clonality:	Polyclonal
Immunogen:	A synthetic peptide made to an internal region of the human VEGFA protein sequence (between residues 150-250). [Swiss-Prot# P15692]
Formulation:	Tris-citrate/phosphate buffer, pH 7-8 and 0.1% sodium azide
Purification:	Affinity purified
Conjugation:	Unconjugated
Storage:	Store at -20°C as received.
Stability:	Stable for 12 months from date of receipt.
Gene Name:	vascular endothelial growth factor A
Database Link:	<a href="#">NP_001020541</a> <a href="#">Entrez Gene 22339</a> <a href="#">MouseEntrez Gene 83785</a> <a href="#">RatEntrez Gene 403802</a> <a href="#">DogEntrez Gene 7422</a> <a href="#">Human</a> <a href="#">P15692</a>
Background:	VEGFA is a member of the PDGF/VEGF growth factor family and is often found as a disulfide linked homodimer. This protein is a glycosylated mitogen that specifically acts on endothelial cells and has various effects, including mediating increased vascular permeability, inducing angiogenesis, vasculogenesis and endothelial cell growth, promoting cell migration, and inhibiting apoptosis. Elevated levels of this protein is linked to POEMS syndrome, also known as Crow-Fukase syndrome. VEGF and its high-affinity binding receptors, the tyrosine kinases FLK1 and FLT1, are thought to be important for the development of embryonic vasculature. It has been shown that an alternately spliced form of FLT1 produces a soluble protein, termed sFLT1, which binds vascular endothelial growth factor with high affinity, playing an inhibitory role in angiogenesis.



[View online »](#)

<b>Synonyms:</b>	MVCD1; VEGF; VPF
<b>Protein Families:</b>	Druggable Genome, Secreted Protein
<b>Protein Pathways:</b>	Bladder cancer, Cytokine-cytokine receptor interaction, Focal adhesion, mTOR signaling pathway, Pancreatic cancer, Pathways in cancer, Renal cell carcinoma, VEGF signaling pathway

**Product images:**

Western Blot: VEGF Antibody TA301750 -  
Detection of VEGFA doublet in CSF-IR/VEGFA  
chimera transfected lysate using.