

## Product datasheet for **TA301748**

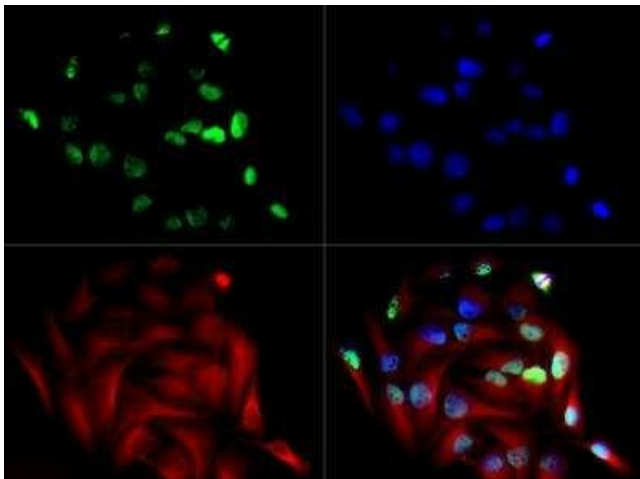
### SPECC1 Rabbit Polyclonal Antibody

#### Product data:

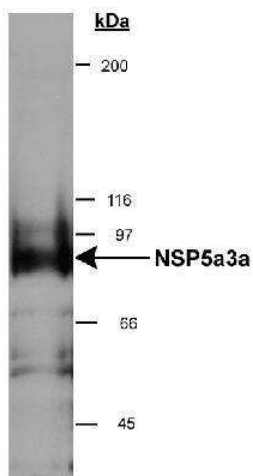
Product Type:	Primary Antibodies
Applications:	ICC/IF, IP, WB
Recommended Dilution:	Immunocytochemistry/ Immunofluorescence: 1:250, Immunoprecipitation, Western Blot: 1:500-1:2000
Reactivity:	Human
Host:	Rabbit
Isotype:	IgG
Clonality:	Polyclonal
Immunogen:	An internal synthetic peptide made to the human NSP5a3a protein sequence (between residues 1-100).
Formulation:	Tris-citrate/phosphate, pH 7-8, 0.1% sodium Azide
Concentration:	lot specific
Purification:	Immunogen affinity purified
Conjugation:	Unconjugated
Storage:	Store at -20°C as received.
Stability:	Stable for 12 months from date of receipt.
Gene Name:	sperm antigen with calponin homology and coiled-coil domains 1
Database Link:	<a href="#">NP_001028727</a> <a href="#">Entrez Gene 92521 Human</a> <a href="#">Q5M775</a>
Background:	NSP type 5alpha/3alpha is a novel structure protein that may play a role in nuclear function during cell division. It is also highly expressed in certain tumor cell lines, suggesting that it may serve as a good tumor marker.
Synonyms:	CYTSB; HCMOGT-1; HCMOGT1; NSP



[View online »](#)

**Product images:**

Immunocytochemistry/Immunofluorescence: NSP 5 alpha 3 alpha Antibody TA301748 - The NSP 5 alpha 3 antibody was tested in HeLa cells at a 1:250 dilution against Dylight 488 (Green). Alpha tubulin and nuclei were counterstained with Dylight 550 (Red) and DAPI (Blue), respectively.



Western Blot: NSP 5 alpha 3 alpha Antibody TA301748 - Detection of NSP 5 alpha 3 alpha in HeLa whole cell lysate (RIPA) using TA301748. 0.5ug/ml dilution, 15 second ECL detection.