

## Product datasheet for **TA301728**

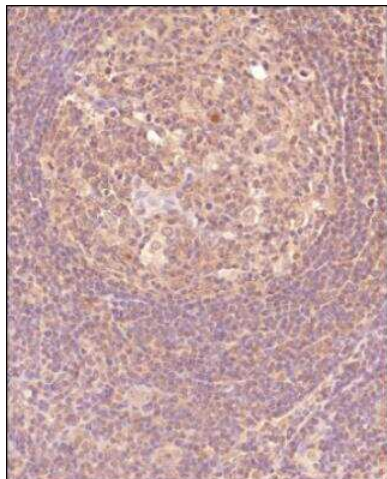
### Ccn2 Rabbit Polyclonal Antibody

#### Product data:

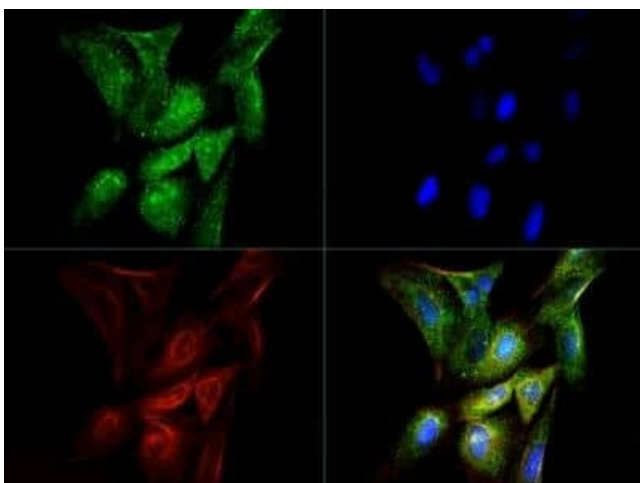
|                       |  |
|-----------------------|--|
| Product Type:         | Primary Antibodies   |
| Applications:         | ICC/IF, IHC, WB  |
| Recommended Dilution: | Immunohistochemistry-Paraffin, Western Blot: 1:1000 - 1:2000, Immunocytochemistry/Immunofluorescence: 1:50 - 1:100, Immunohistochemistry: 1:200  |
| Reactivity:           | Mouse  |
| Host:                 | Rabbit   |
| Isotype:              | IgG  |
| Clonality:            | Polyclonal   |
| Immunogen:            | A synthetic peptide made to a C-terminal portion of the human CTGF protein sequence (between residues 299-349).  |
| Formulation:          | Tris-glycine, 150 mM NaCl, 0.05% sodium azide  |
| Purification:         | Immunogen affinity purified  |
| Conjugation:          | Unconjugated   |
| Storage:              | Store at -20°C as received.  |
| Stability:            | Stable for 12 months from date of receipt.   |
| Gene Name:            | connective tissue growth factor  |
| Database Link:        | <a href="#">NP_034347</a><br><a href="#">Entrez Gene 14219 Mouse</a><br><a href="#">P29268</a>   |
| Background:           | CTGF (connective tissue growth factor) is a 38kDa, cysteine-rich, secreted peptide. It is a new member of the peptide family that include serum-induced immediate early gene products, a v-src-induced peptide and a putative proto-oncogene. Among the many functions of the CTGF gene family are embryogenesis, wound healing and regulation of extracellular matrix production. |
| Synonyms:             | CCN2; HCS24; IGFBP8; MGC102839; NOV2   |



[View online »](#)

**Product images:**

Immunohistochemistry-Paraffin: CTGF/CCN2 Antibody TA301728 - Analysis of a FFPE tissue section of human lymph node using 1:200 dilution of CTGF/CCN2 antibody (TA301728). The staining was developed using HRP labeled anti-rabbit secondary antibody and DAB reagent, and nuclei of cells were counter-stained with hematoxylin.



Immunocytochemistry/Immunofluorescence: CTGF/CCN2 Antibody TA301728 - CTGF antibody was tested in U2OS cells with Dylight 488 (green). Nuclei and alpha-tubulin were counterstained with DAPI (blue) and Dylight 550 (red).