

Product datasheet for **TA301725**

Nucleophosmin (NPM1) Rabbit Polyclonal Antibody

Product data:

Product Type:	Primary Antibodies
Applications:	FC, ICC/IF, IHC, IP, WB
Recommended Dilution:	Immunocytochemistry/ Immunofluorescence: 1:50 - 1:100, Immunohistochemistry: 1:50 - 1:100, Immunohistochemistry-Paraffin: 1:50 - 1:100, Flow Cytometry: 1:100, Immunoprecipitation: 1:50, Western Blot: 1:500
Reactivity:	Human
Host:	Rabbit
Isotype:	IgG
Clonality:	Polyclonal
Immunogen:	A synthetic peptide made to a C-terminal region of human mutant nucleophosmin (exact sequence is within residues 250-298).
Formulation:	100 mM glycine, 65 mM Tris, pH 7.0 in 50% glycerol
Purification:	Affinity purified
Conjugation:	Unconjugated
Storage:	Store at -20°C as received.
Stability:	Stable for 12 months from date of receipt.
Gene Name:	nucleophosmin (nucleolar phosphoprotein B23, numatrin)
Database Link:	NP_002511 Entrez Gene 4869 Human P06748
Background:	Nucleophosmin (NPM) is a multi-functional protein that is involved in many cellular activities including cell growth, proliferation and transformation. It is frequently overexpressed in solid tumors, and has recently been found to be mutated and aberrantly localized in the cytoplasm of leukaemic blasts in patients with acute myeloid leukemia (AML).
Synonyms:	B23; NPM
Protein Families:	Druggable Genome, Stem cell - Pluripotency, Transcription Factors



[View online »](#)

Product images:

mNPM1

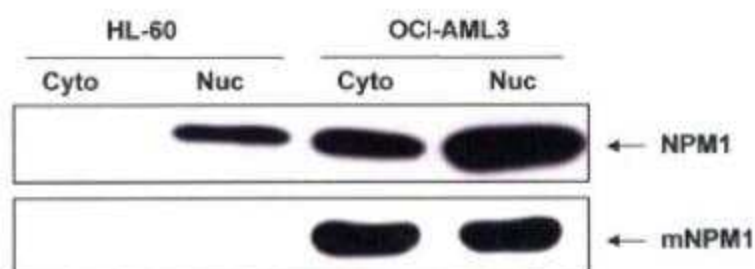


Immunocytochemistry/Immunofluorescence:
Nucleophosmin Antibody TA301725 -
Nucleophosmin localization by
immunofluorescence in OCI-AML3 cells.

mNPM1



Immunocytochemistry/Immunofluorescence:
Nucleophosmin Antibody TA301725 -
Nucleophosmin localization by
immunofluorescence in HL-60 cells (negative
control).



Western Blot: Nucleophosmin Antibody
TA301725 - Detection of mutant Nucleophosmin
in OCI-AML3 lysates.