

## Product datasheet for **TA301693**

### INSIG1 Rabbit Polyclonal Antibody

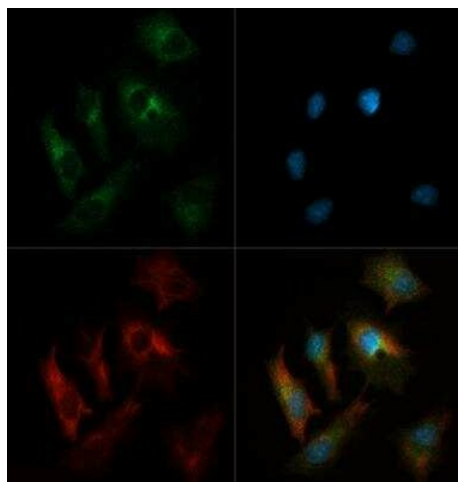
#### Product data:

Product Type:	Primary Antibodies
Applications:	ICC/IF, WB
Recommended Dilution:	Western Blot: 2 ug/ml, Immunocytochemistry/ Immunofluorescence: 1:100-1:1000
Reactivity:	Human
Host:	Rabbit
Isotype:	IgG
Clonality:	Polyclonal
Immunogen:	A synthetic peptide representing an internal region of the human protein (between residues 1-100) according to Swiss-Prot# O15503.
Formulation:	PBS + 30% glycerol and 0.1% sodium azide
Concentration:	lot specific
Purification:	Immunogen affinity purified
Conjugation:	Unconjugated
Storage:	Store at -20°C as received.
Stability:	Stable for 12 months from date of receipt.
Gene Name:	insulin induced gene 1
Database Link:	<a href="#">NP_005533</a> <a href="#">Entrez Gene 3638 Human O15503</a>
Background:	Oxysterols regulate cholesterol homeostasis through liver X receptor (LXR) and sterol regulatory element-binding protein (SREBP) mediated signaling pathway. This gene is an insulin-induced gene. It encodes an endoplasmic reticulum (ER) membrane protein that plays a critical role in regulating cholesterol concentrations in cells. This protein binds to the sterol-sensing domains of SREBP cleavage-activating protein (SCAP) and HMG CoA reductase, and is essential for the sterol-mediated trafficking of the two proteins. Alternatively spliced transcript variants encoding distinct isoforms have been observed.
Synonyms:	CL-6; CL6
Protein Families:	Druggable Genome, Transmembrane

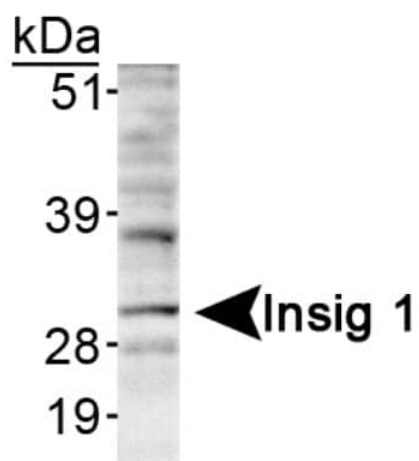


[View online »](#)

## Product images:



Immunocytochemistry/Immunofluorescence: INSIG-1 Antibody TA301693 - INSIG-1 antibody was tested in HepG2 cells with Dylight 488 (green). Nuclei and alpha-tubulin were counterstained with DAPI (blue) and Dylight 550 (red).



Western Blot: INSIG-1 Antibody TA301693 - Detection of Insig 1 in HepG2 lysate using TA301693.