

Product datasheet for **TA301675**

CYP46 (CYP46A1) Rabbit Polyclonal Antibody

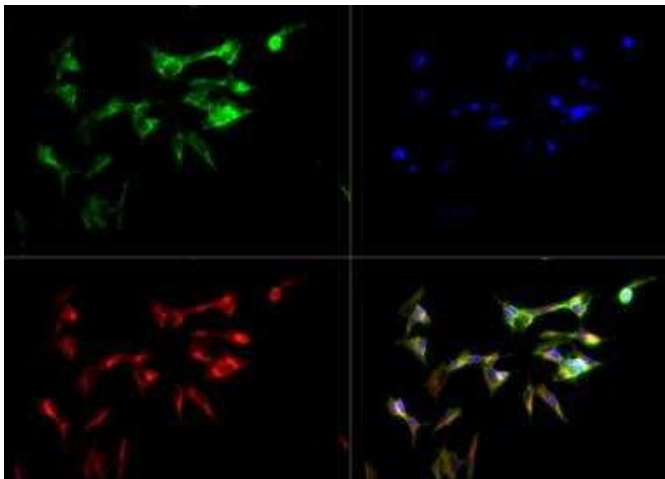
Product data:

Product Type:	Primary Antibodies
Applications:	ICC/IF, IHC, WB
Recommended Dilution:	Western Blot: 1:1000, Immunohistochemistry-Paraffin: 1:200, Immunohistochemistry: 1:200, Immunocytochemistry/ Immunofluorescence: 1:500
Reactivity:	Human
Host:	Rabbit
Isotype:	IgG
Clonality:	Polyclonal
Immunogen:	A synthetic peptide corresponding to residues between 200-250 of human Cyp46.
Conjugation:	Unconjugated
Storage:	Store at -20°C as received.
Stability:	Stable for 12 months from date of receipt.
Gene Name:	cytochrome P450 family 46 subfamily A member 1
Database Link:	NP_006659 Entrez Gene 10858 Human Q9Y6A2
Background:	The Cyp46 gene encodes a member of the cytochrome P450 superfamily of enzymes. The cytochrome P450 proteins are monooxygenases which catalyze many reactions involved in drug metabolism and synthesis of cholesterol, steroids and other lipids. This endoplasmic reticulum protein is expressed in the brain, where it converts cholesterol to 24S-hydroxycholesterol.
Synonyms:	CP46; CYP46
Protein Families:	Druggable Genome, P450
Protein Pathways:	Primary bile acid biosynthesis

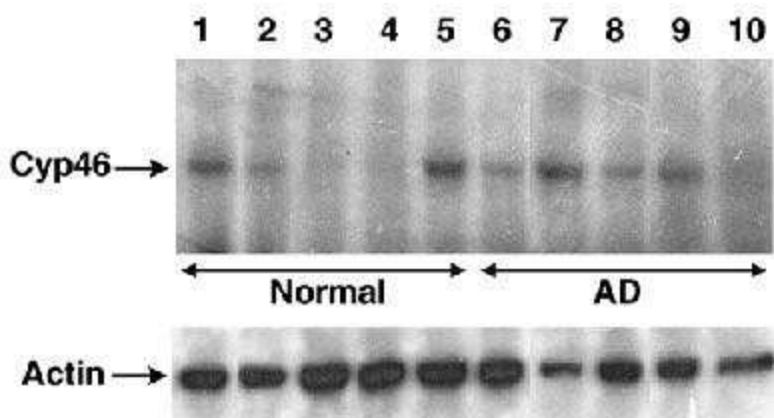


[View online »](#)

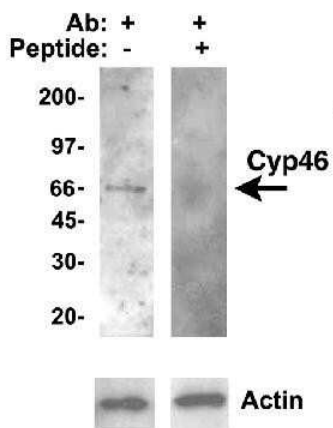
Product images:



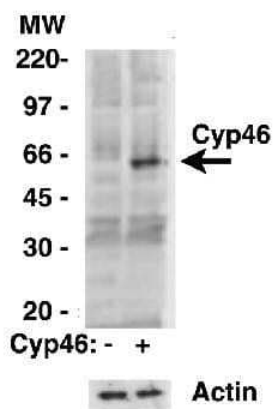
Immunocytochemistry/Immunofluorescence: CYP46A1 Antibody TA301675 - CYP46A1 antibody was tested in SH-SY5Y cells with DyLight 488 (green). Nuclei and alpha-tubulin were counterstained with DAPI (blue) and Dylight 550 (red).



Western Blot: CYP46A1 Antibody TA301675 - Detection of Cyp46 in human brain lysates.



Western Blot: CYP46A1 Antibody TA301675 - Blocking experiment using NB 400-140 in HEK293 cells overexpressing CYP46A1.



Western Blot: CYP46A1 Antibody TA301675 - Analysis of Cyp-46 in HEK293 cells overexpressing CYP46A1 or transfected with an empty vector using TA301675.