

Product datasheet for **TA301674**

Mitofilin (IMMT) Rabbit Polyclonal Antibody

Product data:

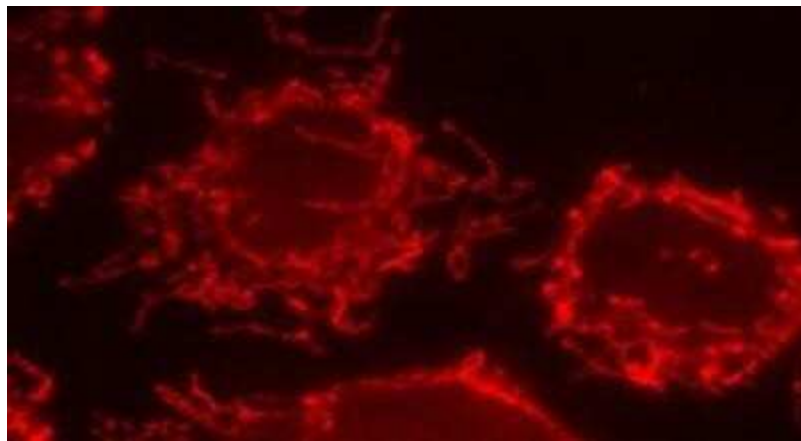
Product Type:	Primary Antibodies
Applications:	ICC/IF, IHC, IP, WB
Recommended Dilution:	Immunohistochemistry-Paraffin: 1:200-1:500, Immunohistochemistry: 1:200-1:500, Immunocytochemistry/ Immunofluorescence: 1:500, Immunoprecipitation, Western Blot: 1:2000
Reactivity:	Human, Rat, Dog, Feline, Mouse
Host:	Rabbit
Isotype:	IgG
Clonality:	Polyclonal
Immunogen:	Whole human recombinant protein.
Formulation:	0.05% sodium azide
Purification:	Whole antisera
Conjugation:	Unconjugated
Storage:	Store at -20°C as received.
Stability:	Stable for 12 months from date of receipt.
Gene Name:	inner membrane mitochondrial protein
Database Link:	NP_006830 Entrez Gene 76614 Mouse Entrez Gene 312444 Rat Entrez Gene 475764 Dog Entrez Gene 10989 Human Q16891

Background: Mitochondria are the center of cellular energy production and essential metabolic reactions. As double membrane-bound organelles, mitochondria from different species, tissues, and metabolic states are highly polymorphic in nature, yet exhibit common structural features. The ultrastructural variations in mitochondrial architecture occur mainly due to the differences in the amount and shape of cristae. Abundant cristae are found in mitochondria from tissues where energy demand is high. Analysis of the human heart mitochondrial proteome shows that mitofilin is one of the most abundant mitochondrial proteins. It appears to play an important role in the maintenance of cristae morphology. Mitofilin was originally described as heart muscle protein (HMP) because of its high expression in the heart.

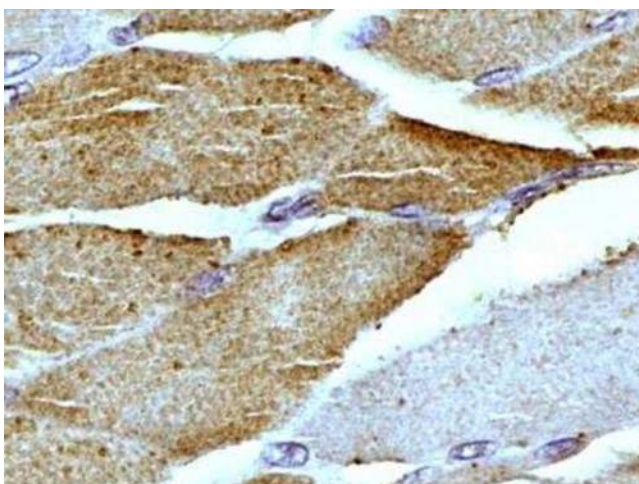

[View online »](#)

Synonyms: 89; HMP; Mic60; MINOS2; P87; P89; PIG4; PIG52

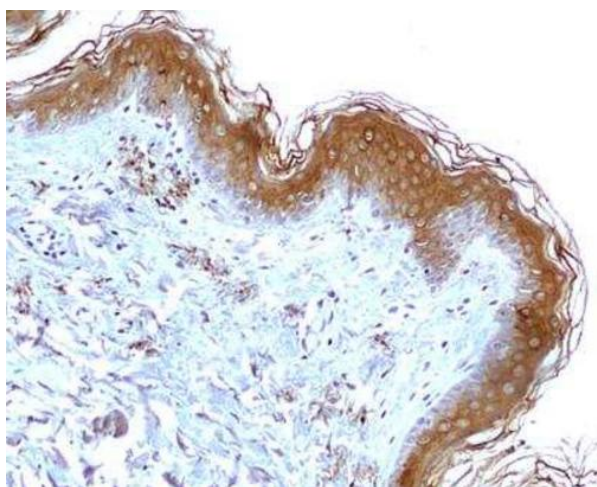
Product images:



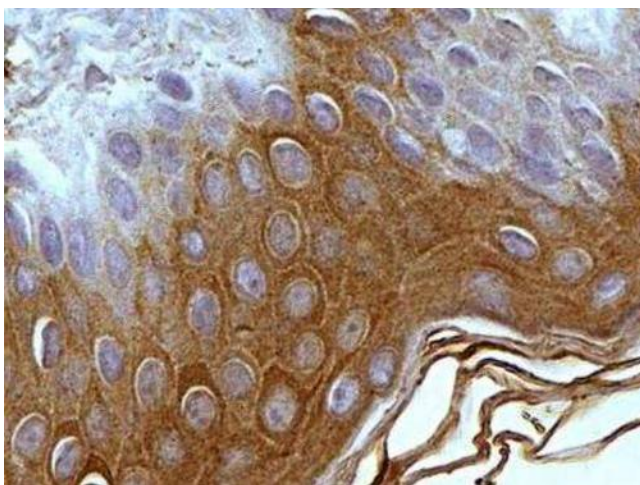
Immunocytochemistry/Immunofluorescence:
Mitofilin Antibody TA301674 - HeLa cells with
antibody 1:500 dilution labeling mitochondria.



Immunohistochemistry-Paraffin: Mitofilin
Antibody TA301674 - IHC-P analysis of
Mitofilin/Mitochondrial inner membrane protein
in a transverse section of normal human skeletal
muscle using Mitofilin antibody at 1:200 dilution.
The myocytes showed an expected and very
specific granular staining in the cytoplasm. [10X
Magnification]



Immunohistochemistry-Paraffin: Mitofilin Antibody TA301674 - IHC-P detection of Mitofilin/Mitochondrial inner membrane protein in a section of normal human skin using Mitofilin antibody at 1:200 dilution. Specific cytoplasmic positivity of Mitofilin was observed in the keratinocytes as well as other cells of the epidermal layer except for basal cells and dermal connective tissue. [10X Magnification]



Immunohistochemistry-Paraffin: Mitofilin Antibody TA301674 - IHC-P detection of Mitofilin/Mitochondrial inner membrane protein in a section of normal human skin using Mitofilin antibody at 1:200 dilution. The representative image shows a specific and expected granular staining of Mitofilin in the keratinocytes as well as the other cells of epidermal layer with no staining in basal cells. [60X Magnification]



Western Blot: Mitofilin Antibody TA301674 - Western blot of dog testis. Total protein extract 1:2000 dilution of antibody.