

Product datasheet for **TA301667**

TPX2 Rabbit Polyclonal Antibody

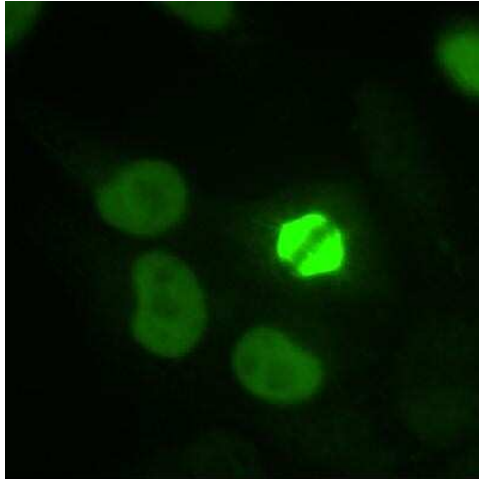
Product data:

Product Type:	Primary Antibodies
Applications:	FC, ICC/IF, IP, Simple Western, WB
Recommended Dilution:	Flow Cytometry, Knockdown Validated, Immunocytochemistry/ Immunofluorescence: 1:1000, Immunoprecipitation: 1:10-1:100, Western Blot: 1:1000, Simple Western: 1:250
Reactivity:	Human, Mouse, Bovine, Goat, Hamster, Sheep
Host:	Rabbit
Isotype:	IgG
Clonality:	Polyclonal
Immunogen:	Produced by immunizing rabbits with a recombinant segment of the C-terminal domain of the human protein
Purification:	Whole antisera
Conjugation:	Unconjugated
Storage:	Store at -20°C as received.
Stability:	Stable for 12 months from date of receipt.
Gene Name:	TPX2, microtubule nucleation factor
Database Link:	NP_036244 Entrez Gene 72119 Mouse Entrez Gene 22974 Human Q9ULW0
Background:	TPX2 is a microtubule cross-linking protein involved in spindle formation. During mitosis it is strictly associated with the mitotic spindle, whereas during phases S and G2, it is diffusely distributed throughout the nucleus.
Synonyms:	C20orf1; C20orf2; DIL-2; DIL2; FLS353; GD:C20orf1; HCA519; HCTP4; p100; REPP86
Protein Families:	Druggable Genome, Stem cell - Pluripotency

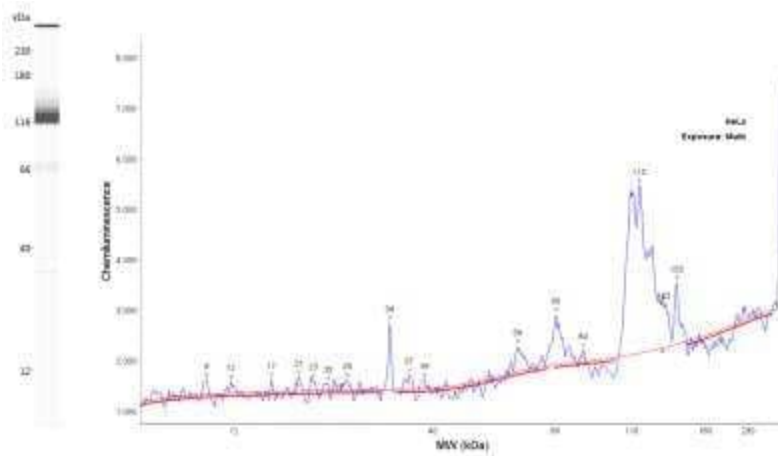


[View online »](#)

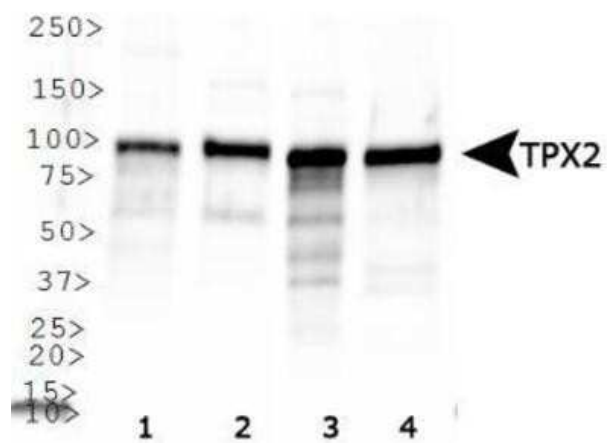
Product images:



Immunocytochemistry/Immunofluorescence: TPX2 Antibody TA301667 - Staining of HeLa cells fixed in 3.5% paraformaldehyde using NB 500-179 (1:1,000). Nuclear staining during interphase and spindle staining during mitosis.



Simple Western: TPX2 Antibody TA301667 - Lane view shows a specific band for TPX2 using HeLa cell lysate and antibody at 1:250. Electropherogram image of corresponding Simple Western lane view. Image reported by internal validation.



Western Blot: TPX2 Antibody TA301667 - Analysis of TPX2 expression in 1) HeLa, 2) Ntera2, 3) K-562 and 4) Raji whole cell lysates using TA301667.