

Product datasheet for TA301661

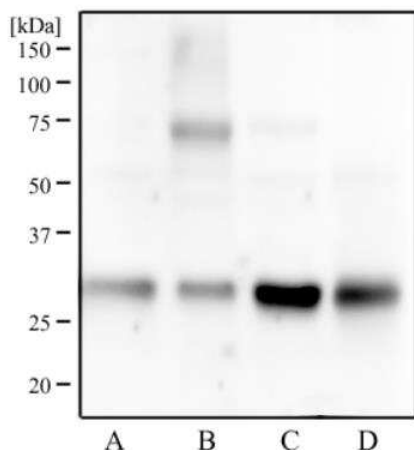
14 3 3 gamma (YWHAG) Mouse Monoclonal Antibody [Clone ID: HS23]

Product data:

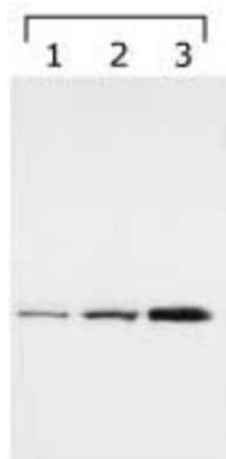
Product Type:	Primary Antibodies
Clone Name:	HS23
Applications:	ICC/IF, Immunoblotting, WB
Recommended Dilution:	Immunocytochemistry/ Immunofluorescence: 1:50 - 1:250, Western Blot: 1:500 - 1:1000, Immunoblotting
Reactivity:	Human, Mouse, Rat, Bovine, Chicken, Zebrafish
Host:	Mouse
Isotype:	IgG1, kappa
Clonality:	Monoclonal
Immunogen:	This antibody was raised against an N-terminal fragment of human 14-3-3 gamma.
Purification:	Ascites
Conjugation:	Unconjugated
Storage:	Store at -20°C as received.
Stability:	Stable for 12 months from date of receipt.
Gene Name:	tyrosine 3-monooxygenase/tryptophan 5-monooxygenase activation protein gamma
Database Link:	NP_036611 Entrez Gene 22628 Mouse Entrez Gene 56010 Rat Entrez Gene 7532 Human P61981
Background:	14-3-3 proteins are present as multigene families in most organisms. Signal-induced phosphorylation has the ability to change protein function. Sometimes, however, phosphorylation is not enough to change a protein's function. 14-3-3 proteins play an important role of bringing signal transduction to completion. They regulate many cellular processes that are important in cancer biology, such as apoptosis and cell-cycle checkpoints.
Synonyms:	14-3-3GAMMA; PPP1R170
Protein Families:	Druggable Genome
Protein Pathways:	Cell cycle, Neurotrophin signaling pathway, Oocyte meiosis


[View online »](#)

Product images:



Western Blot: 14-3-3 gamma Antibody (HS23) TA301661 - Analysis of HeLa (A), A431 (B), NIH3T3 (C) and PC-12 (D) cell lysate using 14-3-3 gamma antibody at 1:500.



Western Blot: 14-3-3 gamma Antibody (HS23) TA301661 - 14-3-3 gamma detected in lysates using NB 100-407. Lane 1: HeLa cell lysate, Lanes 2 and 3: bengamide treated lysates (8h and 24h, respectively).