

Product datasheet for **TA301660**

14 3 3 gamma (YWHAG) Mouse Monoclonal Antibody [Clone ID: KC21]

Product data:

Product Type:	Primary Antibodies
Clone Name:	KC21
Applications:	ICC/IF, Simple Western, WB
Recommended Dilution:	Simple Western: 1:12.5, Immunocytochemistry/ Immunofluorescence: 1:500, Western Blot: 1:1000-1:3000
Reactivity:	Human
Host:	Mouse
Isotype:	IgG2a
Clonality:	Monoclonal
Immunogen:	This antibody was raised against an N-terminal fragment of human 14-3-3 gamma where the N-terminal Val was acetylated.
Formulation:	PBS with 0.05% Sodium Azide
Purification:	Protein G purified
Conjugation:	Unconjugated
Storage:	Store at -20°C as received.
Stability:	Stable for 12 months from date of receipt.
Gene Name:	tyrosine 3-monooxygenase/tryptophan 5-monooxygenase activation protein gamma
Database Link:	NP_036611 Entrez Gene 7532 Human P61981
Background:	14-3-3 proteins are present as multigene families in most organisms. Signal-induced phosphorylation has the ability to change protein function. Sometimes, however, phosphorylation is not enough to change a protein's function. 14-3-3 proteins play an important role of bringing signal transduction to completion. They regulate many cellular processes that are important in cancer biology, such as apoptosis and cell-cycle checkpoints.
Synonyms:	14-3-3GAMMA; PPP1R170
Protein Families:	Druggable Genome



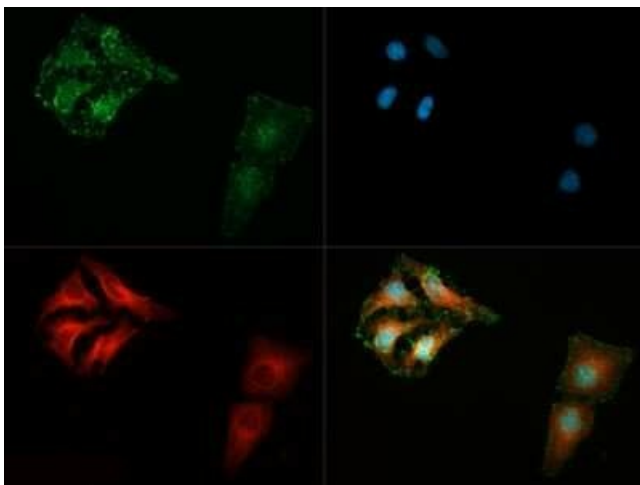
[View online »](#)

Protein Pathways: Cell cycle, Neurotrophin signaling pathway, Oocyte meiosis

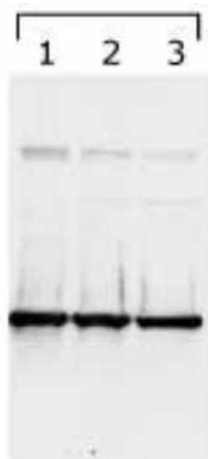
Product images:



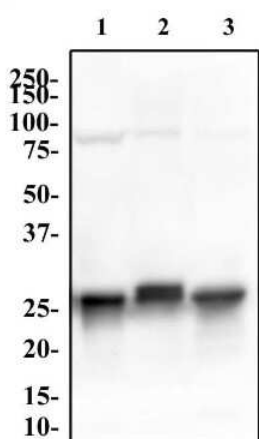
Simple Western: 14-3-3 gamma [ac Val2] Antibody (KC21) TA301660 - Lane view shows a specific band for 14-3-3 Gamma in 1.0 mg/ml of HeLa lysate. This experiment was performed under reducing conditions using the 12-230kDa separation system.



Immunocytochemistry/Immunofluorescence: 14-3-3 gamma [ac Val2] Antibody (KC21) TA301660 - 14-3-3 gamma [ac Val2] antibody was tested in SH-SY5Y cells with DyLight 488 (green). Nuclei and alpha-tubulin were counterstained with DAPI (blue) and DyLight 550 (red).



Western Blot: 14-3-3 gamma [ac Val2] Antibody (KC21) TA301660 - 14-3-3 gamma detected in lysates using TA301660. Lane 1: HeLa cell lysates, Lanes 2 and 3: bengamide treated lysates (8h and 24h, respectively).



Western Blot: 14-3-3 gamma [ac Val2] Antibody (KC21) TA301660 - (1) HeLa, (2) PC12 and (3) NIH-3T3 whole cell lysates were separated by SDS-PAGE on a 12% gel and transferred to PVDF membrane. The membrane was probed with Anti-14-3-3 gamma [Ac Val2] antibody at 2 ug/ml for 1 hour, followed by incubation a 1:10,000 dilution of anti-rabbit HRP. The protein was detected at approximately 28 kDa after incubation with SuperSignal West Pico Chemiluminescent substrate.