

Product datasheet for **TA301654**

S100 alpha 6 (S100A6) Rabbit Polyclonal Antibody

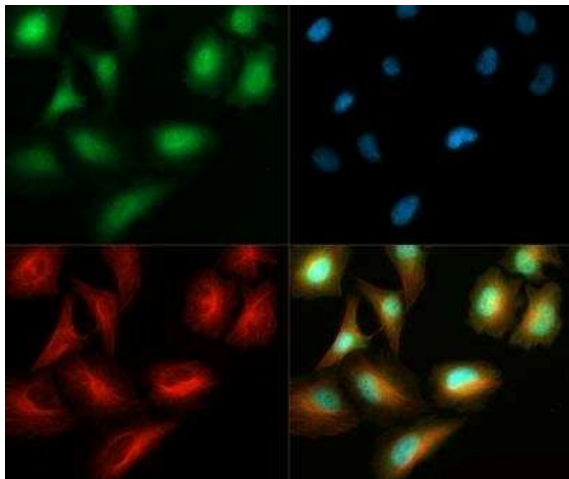
Product data:

Product Type:	Primary Antibodies
Applications:	ICC/IF, WB
Recommended Dilution:	Immunocytochemistry/ Immunofluorescence: 1:500, Western Blot: 1:1000
Reactivity:	Human, Mouse, Rat
Host:	Rabbit
Isotype:	IgG
Clonality:	Polyclonal
Immunogen:	Full length human S100A6 protein [Swiss-Prot# P06703] expressed in E. coli.
Formulation:	PBS and 0.1% sodium azide
Purification:	Whole antisera
Conjugation:	Unconjugated
Storage:	Store at -20°C as received.
Stability:	Stable for 12 months from date of receipt.
Gene Name:	S100 calcium binding protein A6
Database Link:	NP_055439 Entrez Gene 20200 MouseEntrez Gene 85247 RatEntrez Gene 6277 Human P06703
Background:	S100A6 is a member of the S100 family of proteins, and may function in stimulation of Ca ²⁺ -dependent insulin release, stimulation of prolactin secretion, and exocytosis. Recent studies have found that S100A6 is induced by tumour necrosis factor-alpha via a NF-kappaB-dependent mechanism which serves a role in limiting tumour necrosis factor-alpha-induced apoptosis by regulating p53 phosphorylation (1).
Synonyms:	2A9; 5B10; CABP; CACY; PRA

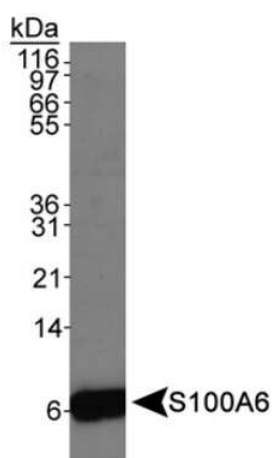


[View online »](#)

Product images:



Immunocytochemistry/Immunofluorescence:
S100A6 Antibody TA301654 - S100A6 antibody
was tested in HeLa cells with Dylight 488 (green).
Nuclei and alpha-tubulin were counterstained
with DAPI (blue) and Dylight 550 (red).



Western Blot: S100A6 Antibody TA301654 -
Detection of S100A6 antibody in HeLa whole cell
extracts using TA301654.