

Product datasheet for **TA301650**

SLC9A8 Mouse Monoclonal Antibody [Clone ID: 7A11]

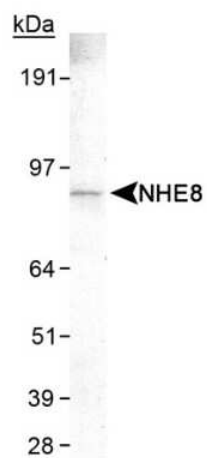
Product data:

Product Type:	Primary Antibodies
Clone Name:	7A11
Applications:	ICC/IF, WB
Recommended Dilution:	Immunocytochemistry/ Immunofluorescence, Western Blot: 2 ug/ml (ECL)
Reactivity:	Human
Host:	Mouse
Isotype:	IgG
Clonality:	Monoclonal
Immunogen:	A fusion protein containing the C-terminal 89 residues of human NHE8.
Formulation:	Tris-glycine, 150mM NaCl and 0.05% sodium azide
Concentration:	lot specific
Purification:	protein G purified
Conjugation:	Unconjugated
Storage:	Store at -20°C as received.
Stability:	Stable for 12 months from date of receipt.
Gene Name:	solute carrier family 9 member A8
Database Link:	NP_056081 Entrez Gene 23315 Human Q9Y2E8
Background:	Sodium-Hydrogen ion Exchangers (NHEs) are a growing family of transmembrane proteins. NHE8 is expressed in the kidney, where it may contribute to apical membrane ion transport physiology. It is highly expressed in the proximal tubules in the outer stripe of the outer medulla with significant but lower expression in the proximal tubules in the cortex.
Synonyms:	NHE-8; NHE8
Protein Families:	Druggable Genome, Transmembrane



[View online »](#)

Product images:



Western Blot: NHE8 Antibody (7A11) TA301650 -
Detection of NHE8 (7A11) in HeLa whole cell
lysate