

Product datasheet for **TA301649**

TAZ (WWTR1) Rabbit Polyclonal Antibody

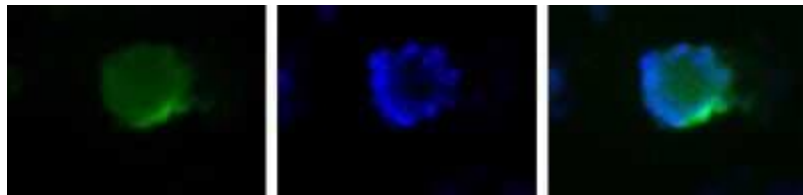
Product data:

Product Type:	Primary Antibodies
Applications:	ChIP, ICC/IF, IHC, IP, Simple Western, WB
Recommended Dilution:	Immunohistochemistry-Paraffin: 1:500, Proximity Ligation Assay, Immunohistochemistry: 1:500, Simple Western: 1:100, Immunocytochemistry/ Immunofluorescence: 1:50-1:200, Immunoprecipitation: 1:100, Western Blot: 1:1000-1:5000, Chromatin Immunoprecipitation, Chromatin Immunoprecipitation (ChIP)
Reactivity:	Human
Host:	Rabbit
Isotype:	IgG
Clonality:	Polyclonal
Immunogen:	Synthetic peptides made to the human TAZ protein. These peptides were selected for the lack of homology to YAP protein.
Formulation:	PBS, 15% glycerol and 0.02% sodium azide
Purification:	Affinity purified
Conjugation:	Unconjugated
Storage:	Store at -20°C as received.
Stability:	Stable for 12 months from date of receipt.
Gene Name:	WW domain containing transcription regulator 1
Database Link:	NP_056287 Entrez Gene 25937 Human Q9GZV5
Background:	TAZ is YAP-related protein that contains a WW domain and transcriptional activation region. The gene plays a role in mesenchymal stem cell differentiation. The antibody was designed in such a way that should generate a TAZ specific-reagent able to differentiate between YAP and TAZ proteins in cells and tissues.
Synonyms:	TAZ
Protein Families:	Druggable Genome, Transcription Factors

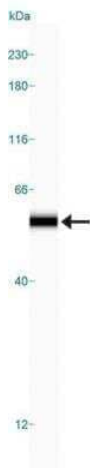


[View online »](#)

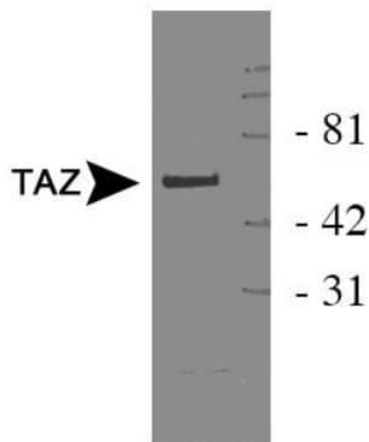
Product images:



Immunocytochemistry/Immunofluorescence: TAZ/WWTR1 Antibody TA301649 - Detection of TAZ (Green) in HepG2 cells using TA301649. Nuclei (Blue) are counterstained with Hoechst 33258.



Simple Western: TAZ/WWTR1 Antibody TA301649 - Simple Western lane view shows a specific band for TAZ in 0.5 mg/ml of HeLa lysate. This experiment was performed under reducing conditions using the 12-230 kDa separation system.



Western Blot: TAZ/WWTR1 Antibody TA301649 - Detection of TAZ on HEK 293 cell lysate using TA301649.