

Product datasheet for **TA301644**

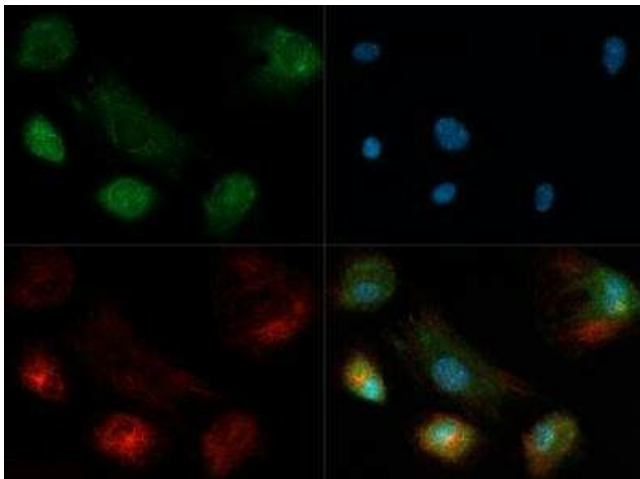
ROBO4 Rabbit Polyclonal Antibody

Product data:

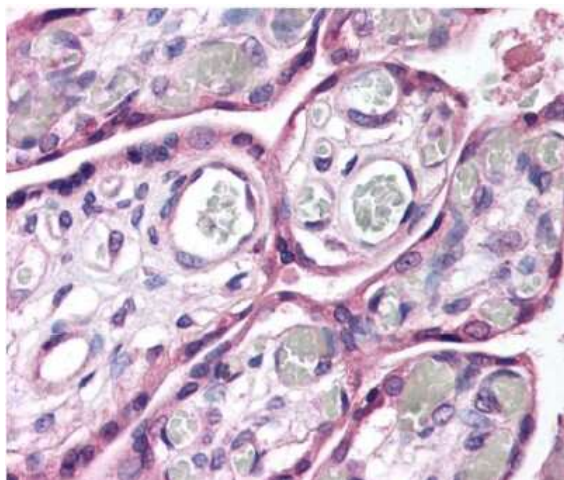
Product Type:	Primary Antibodies
Applications:	ICC/IF, IHC, WB
Recommended Dilution:	Immunocytochemistry/ Immunofluorescence, Immunohistochemistry: 5 ug/ml, Western Blot: 1:500, Immunohistochemistry-Paraffin: 5 ug/ml
Reactivity:	Human
Host:	Rabbit
Isotype:	IgG
Clonality:	Polyclonal
Immunogen:	A synthetic peptide made to a C-terminal region of the human protein (within residues 900-1007). [Swiss-Prot# Q8WZ75]
Formulation:	Tris-citrate/phosphate [pH 7-8] and 0.1% sodium azide
Concentration:	lot specific
Purification:	Immunogen affinity purified
Conjugation:	Unconjugated
Storage:	Store at -20°C as received.
Stability:	Stable for 12 months from date of receipt.
Gene Name:	roundabout guidance receptor 4
Database Link:	NP_061928 Entrez Gene 54538 Human Q8WZ75
Background:	Roundabouts (ROBO) are cell-surface receptors that mediate repulsive signaling mechanisms at the central nervous system midline. However, ROBOs may also mediate attraction mechanisms in the context of vascular development. ROBO4 is a novel roundabout protein which is restricted in expression to endothelial cells in vitro and sites of angiogenesis in vivo. Because it is not expressed on normal endothelial cells, in vivo, it is a promising tumor endothelial marker.
Synonyms:	ECSM4; MRB
Protein Families:	Druggable Genome



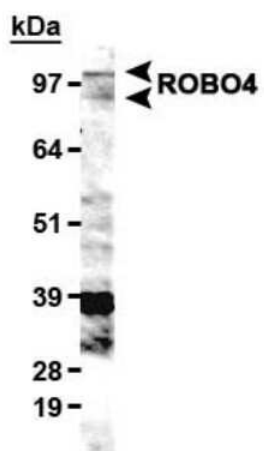
[View online »](#)

Product images:

Immunocytochemistry/Immunofluorescence: Robo4 Antibody TA301644 - Robo4 antibody was tested in Huvec cells with Dylight 488 (green). Nuclei and alpha-tubulin were counterstained with DAPI (blue) and Dylight 550 (red).



Immunohistochemistry: Robo4 Antibody TA301644 - Detection of ROBO4 in human placental epithelial cells and trophoblasts.



Western Blot: Robo4 Antibody TA301644 -
Detection of ROBO4 in HUVEC lysate.