

Product datasheet for **TA301640**

p90 Autoantigen (KIAA1524) Mouse Monoclonal Antibody [Clone ID: 2G10]

Product data:

Product Type:	Primary Antibodies
Clone Name:	2G10
Applications:	FC, ICC/IF, IHC, WB
Recommended Dilution:	Knockdown Validated, Western Blot: 1:1000-1:2000, Immunocytochemistry/ Immunofluorescence: 1:40, Flow Cytometry: 1 ug per million cells, Immunohistochemistry: 1:100 - 1:200, Immunohistochemistry-Paraffin
Reactivity:	Human
Host:	Mouse
Isotype:	IgG2b, kappa
Clonality:	Monoclonal
Immunogen:	A C-terminal portion of the human p90 protein.
Formulation:	Tris-glycine, 150mM NaCl and 0.05% sodium azide
Concentration:	lot specific
Purification:	protein G purified
Conjugation:	Unconjugated
Storage:	Store at -20°C as received.
Stability:	Stable for 12 months from date of receipt.
Gene Name:	KIAA1524
Database Link:	NP_065941 Entrez Gene 57650 Human Q8TCG1



[View online »](#)

Background:

Inhibition of protein phosphatase 2A (PP2A) activity has been identified as a prerequisite for the transformation of human cells. The protein, designated Cancerous Inhibitor of PP2A (CIP2A), interacts directly with the oncogenic transcription factor c-Myc, inhibits PP2A activity toward c-Myc serine 62 (S62), and thereby prevents c-Myc proteolytic degradation. In addition to its function in c-Myc stabilization, CIP2A promotes anchorage-independent cell growth and in vivo tumor formation. The oncogenic activity of CIP2A is demonstrated by transformation of human cells by overexpression of CIP2A. Importantly, CIP2A is overexpressed in two common human malignancies, head and neck squamous cell carcinoma (HNSCC) and colon cancer.

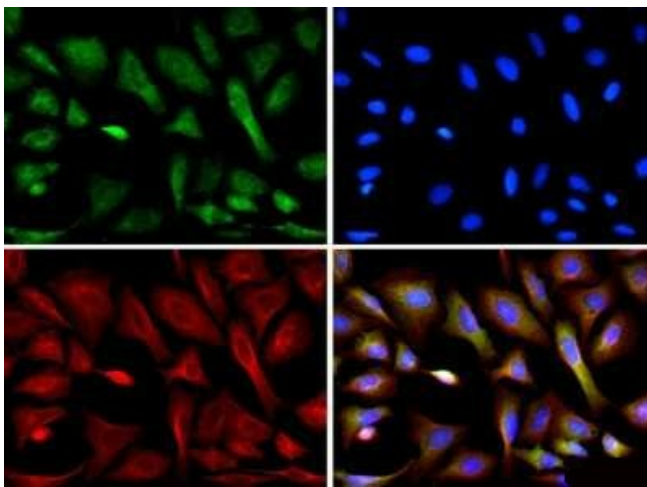
Synonyms:

CIP2A; p90

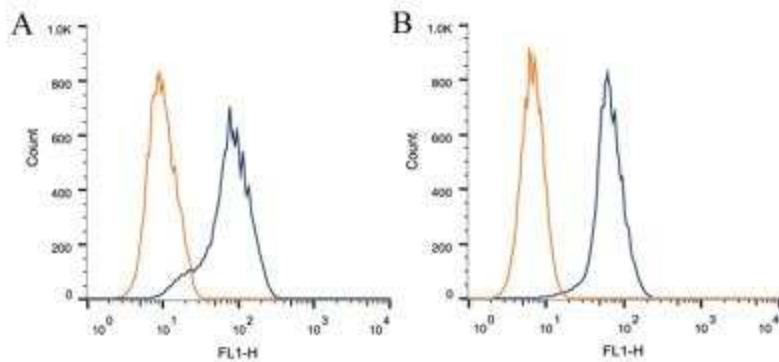
Protein Families:

Druggable Genome

Product images:



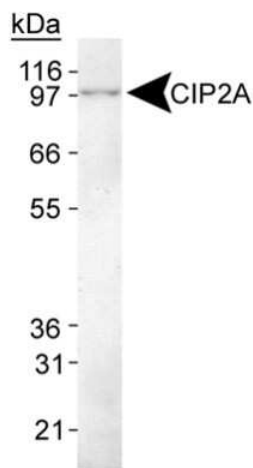
Immunocytochemistry/Immunofluorescence: CIP2A Antibody (2G10) TA301640 - CIP2A antibody was tested in U2OS cells with Dylight 488 (green). Nuclei and alpha-tubulin were counterstained with DAPI (blue) and Dylight 550 (red).



Flow Cytometry: CIP2A Antibody (2G10) TA301640 - Intracellular flow cytometric staining of 1×10^6 CHO (A) and HEK-293 (B) cells using CIP2A antibody (dark blue). Isotype control shown in orange. An antibody concentration of $1 \mu\text{g}/1 \times 10^6$ cells was used.



Western Blot: CIP2A Antibody (2G10) TA301640 - Analysis of CIP2A in NIH/3T3 cell lysate.



Western Blot: CIP2A Antibody (2G10) TA301640 - Detection of CIP2A in HeLa whole cell lysate.