

Product datasheet for **TA301605**

Lipin 1 (LPIN1) Rabbit Polyclonal Antibody

Product data:

Product Type:	Primary Antibodies
Applications:	IHC, WB
Recommended Dilution:	Western Blot: 1.0-2.0 ug/ml, Immunohistochemistry: 1:100-1:250, Immunohistochemistry-Paraffin: 1:100-1:250
Reactivity:	Human, Mouse, Rat
Host:	Rabbit
Isotype:	IgG
Clonality:	Polyclonal
Immunogen:	A synthetic peptide to an internal region (within residues 300-400) of the human LPIN1 protein. [Swiss-Prot# Q14693]
Formulation:	PBS + 30% glycerol and 0.1% sodium azide
Concentration:	lot specific
Purification:	peptide affinity purified
Conjugation:	Unconjugated
Storage:	Store at -20°C as received.
Stability:	Stable for 12 months from date of receipt.
Gene Name:	lipin 1
Database Link:	NP_663731 Entrez Gene 14245 Mouse Entrez Gene 313977 Rat Entrez Gene 23175 Human Q14693



[View online »](#)

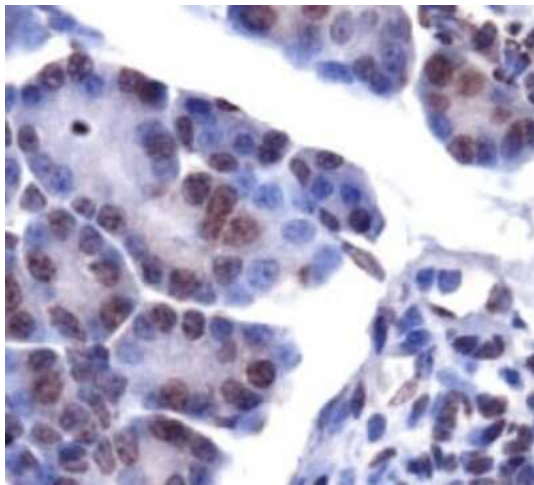
Background:

The Lipin family of nuclear proteins contains three members: Lipin-1, Lipin-2 and Lipin-3, all of which contain a nuclear signal sequence, a highly conserved amino-terminal (NLIP) domain and a carboxy-terminal (CLIP) domain. LPIN1 (Lipin-1) is crucial for normal adipose tissue development and metabolism. LPIN1 selectively activates a subset of PGC-1 target pathways, including fatty acid oxidation and mitochondrial oxidative phosphorylation by inducing expression of the nuclear receptor PPAR; LPIN1 also inactivates the lipogenic program and suppresses circulating lipid levels. An abundance of LPIN1 promotes fat accumulation and insulin sensitivity, whereas a deficiency in LPIN1 may deter normal adipose tissue development, resulting in insulin resistance and lipodystrophy, a heterogeneous group of disorders characterized by loss of body fat, fatty liver, hypertriglyceridemia and insulin resistance.

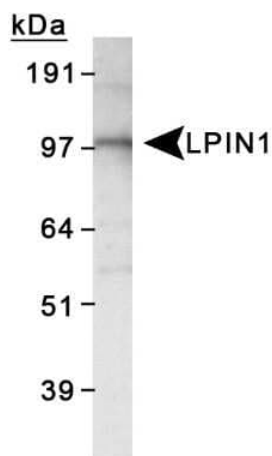
Synonyms:

PAP1

Product images:



Immunohistochemistry: LPIN1 Antibody TA301605 - Staining of LPIN1 in mouse pancreas.



Western Blot: LPIN1 Antibody TA301605 - Detection of LPIN1 in 3T3L1 lysate.