

Product datasheet for **TA301601**

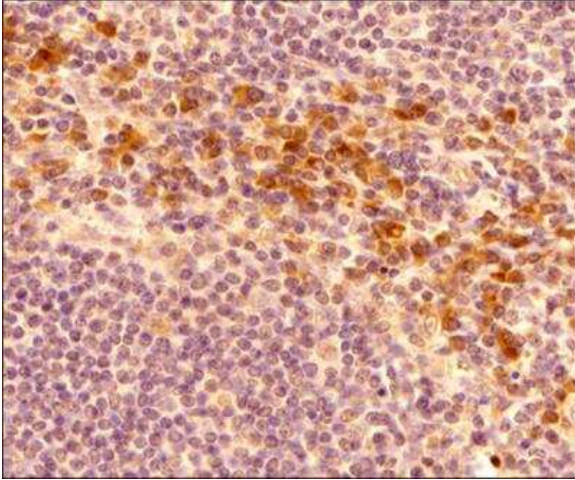
Syvn1 Rabbit Polyclonal Antibody

Product data:

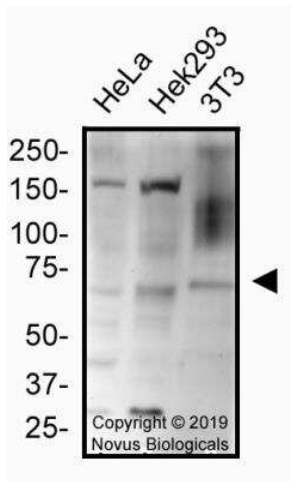
Product Type:	Primary Antibodies
Applications:	ICC/IF, IHC, IP, WB
Recommended Dilution:	Immunohistochemistry: 1:200 - 1:500, Western Blot: 1:1000 - 1:2000, Immunocytochemistry/ Immunofluorescence: 1:500, Knockout Validated, Immunoprecipitation, Immunohistochemistry-Paraffin: 1:200 - 1:500
Reactivity:	Mouse
Host:	Rabbit
Isotype:	IgG
Clonality:	Polyclonal
Immunogen:	A synthetic peptide made to an internal portion of the human protein (within residues 300-400). [UniProt Q96PK3]
Conjugation:	Unconjugated
Storage:	Store at -20°C as received.
Stability:	Stable for 12 months from date of receipt.
Gene Name:	synovial apoptosis inhibitor 1, synoviolin
Database Link:	NP_083045 Entrez Gene 74126 Mouse Q9DBY1
Background:	HRD1 is a ubiquitin ligase whose expression is induced by the unfolded protein response (UPR) following endoplasmic reticulum stress. Expression of HRD1 protects cells from apoptosis by inducing degradation of abnormally processed proteins that accumulate in the endoplasmic reticulum. HRD1 is expressed in many tissues, strongly expressed in brain, pancreas, liver, kidney and skeletal muscle. It has been reported that Synoviolin/Hrd1 (expressed in rheumatoid synovium) is a novel causative factor for arthropathy by triggering synovial cell outgrowth through its anti-apoptotic effects. HRD1 contains one ring-type zinc finger.
Synonyms:	HRD1; KIAA1810; MGC40372



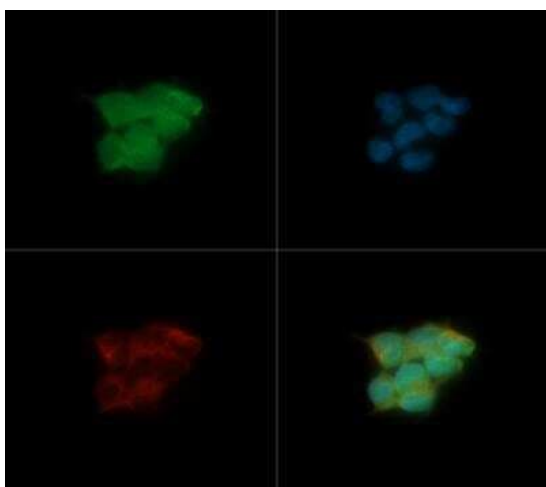
[View online »](#)

Product images:

Immunohistochemistry-Paraffin: HRD1 Antibody TA301601 - FFPE tissue section of human tonsil using rabbit polyclonal HRD1 antibody at 2 ug/mL concentration (1:500 dilution). The primary antibody binding to SYVN1/HRD1 antigen in cells was detected using HRP conjugated anti-Rabbit secondary antibody with DAB reagent, and the sections were further counterstained with hematoxylin for labeling cellular nuclei. This HRD1 antibody generated an expected cytoplasmic staining of HRD1 with stronger signal around periphery of the nucleus signifying the staining of the endoplasmic reticulum.



Western Blot: HRD1 Antibody TA301601 - Total protein from human HeLa, Hek293 and mouse 3T3 cell lines was separated on a 7.5% gel by SDS-PAGE, transferred to PVDF membrane and blocked in 5% non-fat milk in TBST. The membrane was probed with 2.0 ug/ml anti-HRD1 in block buffer and detected with an anti-rabbit HRP secondary antibody using West Pico PLUS chemiluminescence detection reagent.



Immunocytochemistry/Immunofluorescence:
HRD1 Antibody TA301601 - HRD1 antibody was tested in Hek293 cells with Dylight 488 (green). Nuclei and alpha-tubulin were counterstained with DAPI (blue) and Dylight 550 (red).