

## Product datasheet for TA301588

### Telomerase reverse transcriptase (TERT) Mouse Monoclonal Antibody [Clone ID: 2C4]

#### Product data:

Product Type:	Primary Antibodies
Clone Name:	2C4
Applications:	ChIP, FC, ICC/IF, IHC, IP, WB
Recommended Dilution:	Flow Cytometry: 1:50 - 1:200, Western Blot: 1:500, Immunoprecipitation: 1:10-1:500, Immunocytochemistry/ Immunofluorescence: 1:50-1:200, Chromatin Immunoprecipitation, Immunohistochemistry: 1:50, Immunohistochemistry-Paraffin: 1:50, Chromatin Immunoprecipitation (ChIP)
Reactivity:	Human
Host:	Mouse
Isotype:	IgM
Clonality:	Monoclonal
Immunogen:	Full-length recombinant hTERT from insect cells.
Formulation:	PBS with 0.02% Sodium Azide
Purification:	Ascites
Conjugation:	Unconjugated
Storage:	Store at -20°C as received.
Stability:	Stable for 12 months from date of receipt.
Gene Name:	telomerase reverse transcriptase
Database Link:	<a href="#">NP_937983</a> <a href="#">Entrez Gene 7015 Human</a> <a href="#">Q14746</a>
Background:	Telomeres are nucleoprotein structures at the ends of eukaryotic chromosomes. They regulate several crucial cellular functions and participate in the control of complex phenotypes, such as aging and cancer. Cell immortalization is strongly associated with the stabilization of telomere length. Therefore, it is suggested that cancer cells achieve immortalization in part through illegitimate activation of telomerase expression. hTERT is the rate-limiting catalytic subunit of telomerase. Telomerase is an enzyme uniquely associated with immortal cell lines and is useful for identifying undifferentiated PSCs.

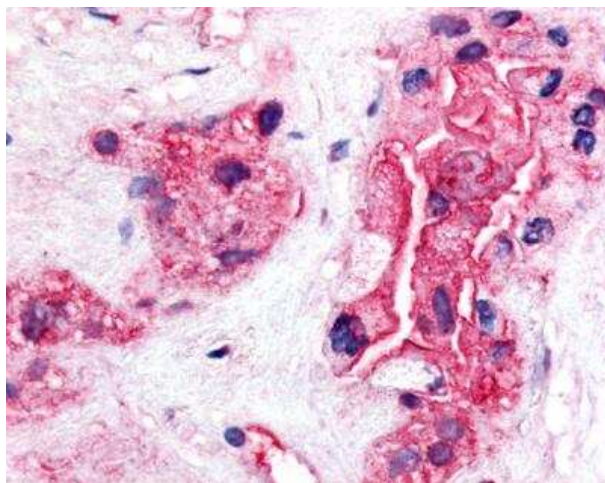

[View online »](#)



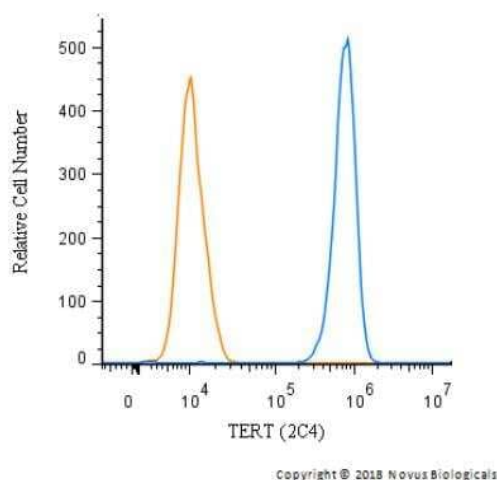
**Synonyms:** CMM9; DKCA2; DKCB4; EST2; hEST2; hTERT; PFBMFT1; TCS1; TP2; TRT

**Protein Families:** Druggable Genome

**Product images:**

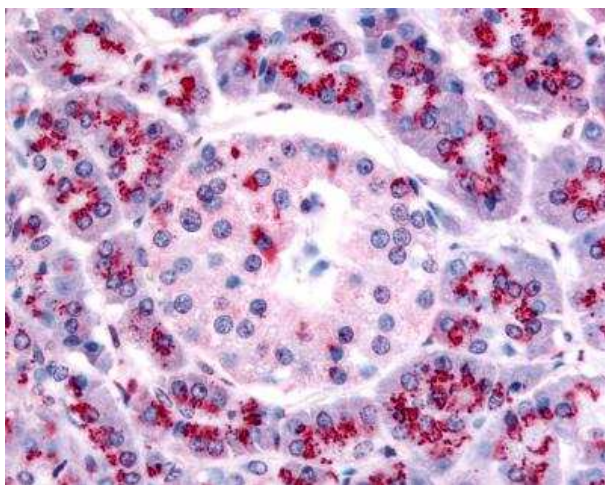


Immunohistochemistry-Paraffin: TERT Antibody (2C4) TA301588 - Human Pancreatic carcinoma showing strong staining of tumor cells.

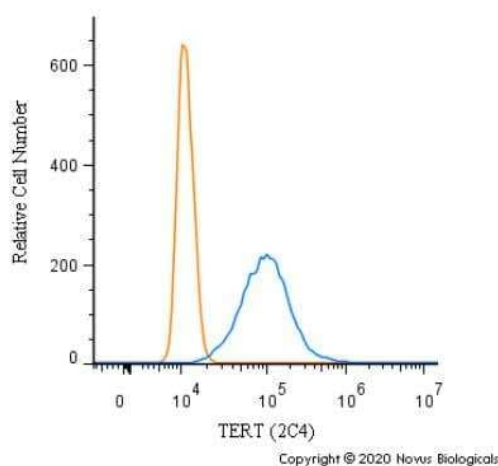


Flow Cytometry: TERT Antibody (2C4) TA301588 - An intracellular stain was performed on Jurkat cells with TERT Antibody (2C4) TA301588 (blue) and a matched isotype control (orange). Cells were fixed with 4% PFA and then permeabilized with 0.1% saponin. Cells were incubated in an antibody dilution of 1 ug/mL for 30 minutes at room temperature, followed by mouse IgM Alexa Fluor 488-conjugated secondary antibody.

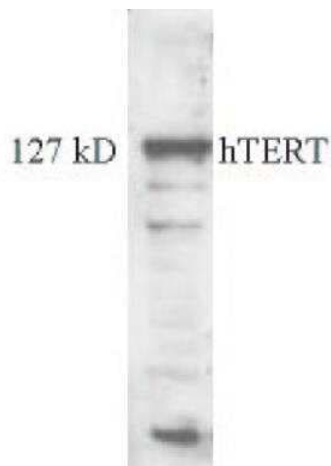




Immunohistochemistry-Paraffin: TERT Antibody (2C4) TA301588 - Normal human pancreas showing moderate staining of exocrine cells and a subset of islets of Langerhans.



Flow Cytometry: TERT Antibody (2C4) TA301588 - An intracellular stain was performed on A431 cells with TERT Antibody [2C4] TA301588 (blue) and a matched isotype control (orange). Cells were fixed with 4% PFA and then permeabilized with 0.1% saponin. Cells were incubated in an antibody dilution of 1.0 ug/mL for 30 minutes at room temperature, followed by Mouse IgM (H+L) Cross-Adsorbed Secondary Antibody, AlexaFluor 488.



Western Blot: TERT Antibody (2C4) TA301588 - 1:500 dilution on MJ90 cells.