

Product datasheet for **TA301569**

beta V Tubulin (TUBB) Rabbit Polyclonal Antibody

Product data:

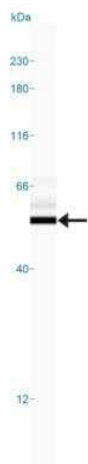
Product Type:	Primary Antibodies
Applications:	ICC/IF, IHC, Simple Western, WB
Recommended Dilution:	Western Blot: 1:1000, Immunohistochemistry: 1:1000 - 1:2000, Immunohistochemistry-Paraffin: 1:1000 - 1:2000, Simple Western: 1:1000, Immunocytochemistry/Immunofluorescence: 1:500 - 1:1000
Reactivity:	Human, Mouse, Chicken, Xenopus, Porcine, Zebrafish, Hamster, Rat
Host:	Rabbit
Isotype:	IgG
Clonality:	Polyclonal
Immunogen:	A synthetic peptide made to the N-terminal region of human beta tubulin (within residues 1-100). Swiss-Prot P07437.
Formulation:	PBS and 0.02% sodium azide
Concentration:	lot specific
Purification:	IgG purified
Conjugation:	Unconjugated
Storage:	Store at -20°C as received.
Stability:	Stable for 12 months from date of receipt.
Gene Name:	tubulin beta class I
Database Link:	NP_821133 Entrez Gene 203068 Human P07437
Background:	Tubulin is the major building block of microtubules. This intracellular cylindrical filamentous structure is present in almost all eukaryotic cells. Microtubules function as structural and mobile elements in mitosis, intracellular transport, flagellar movement, and in the cytoskeleton. Antibodies against beta Tubulin are useful as loading controls for Western Blotting.
Synonyms:	CDCBM6; CSCSC1; M40; OK; SW-cl.56; TUBB1; TUBB5
Protein Families:	Druggable Genome



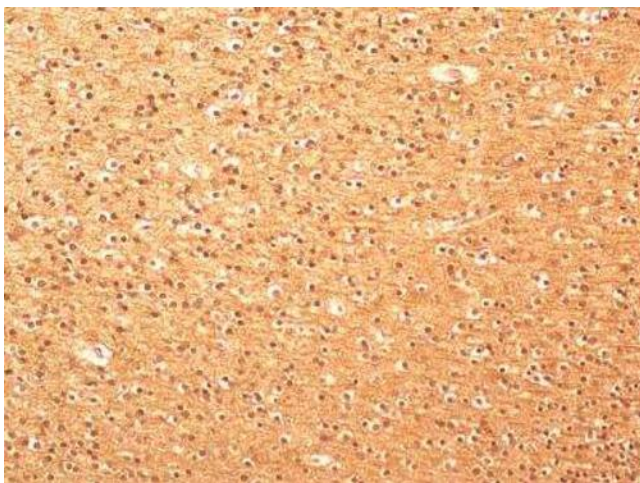
[View online »](#)

Protein Pathways: Gap junction, Pathogenic Escherichia coli infection

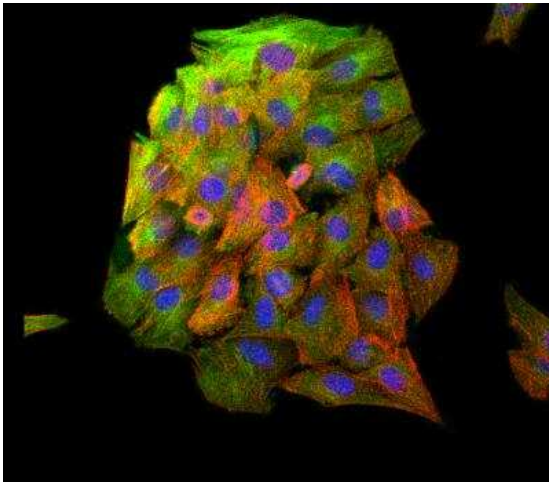
Product images:



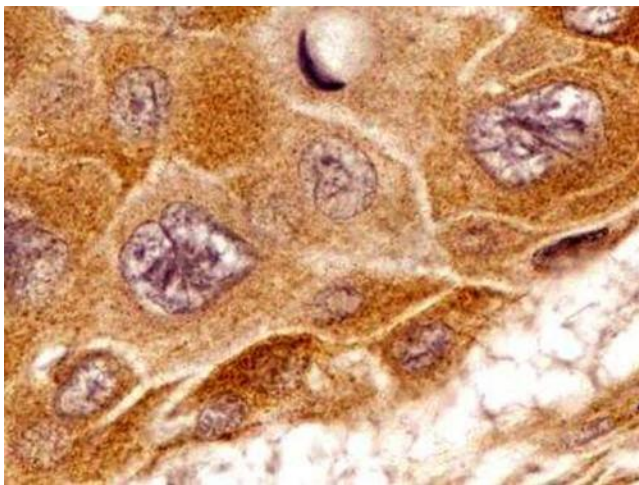
Simple Western: beta Tubulin Antibody TA301569 - Lane view shows a specific band for beta Tubulin in 0.05 mg/ml of MCF-7 lysate. This experiment was performed under reducing conditions using the 12-230 kDa separation system.



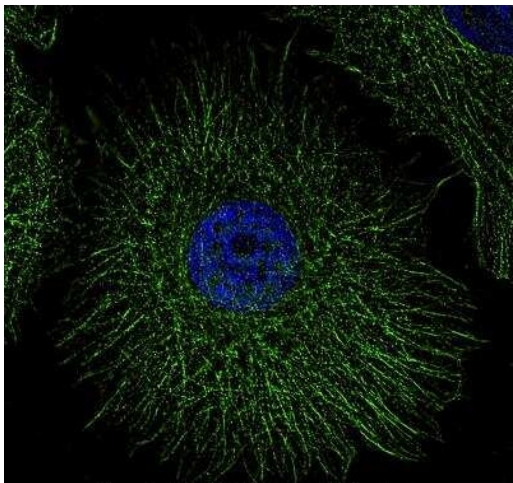
Immunohistochemistry-Paraffin: beta Tubulin Antibody TA301569 - Analysis of FFPE tissue section of normal human brain using 1:2000 dilution of beta Tubulin antibody. The various brain cells depicted strong cytoplasmic immunoreactivity of beta Tubulin (TUBB) protein [10X Magnification].



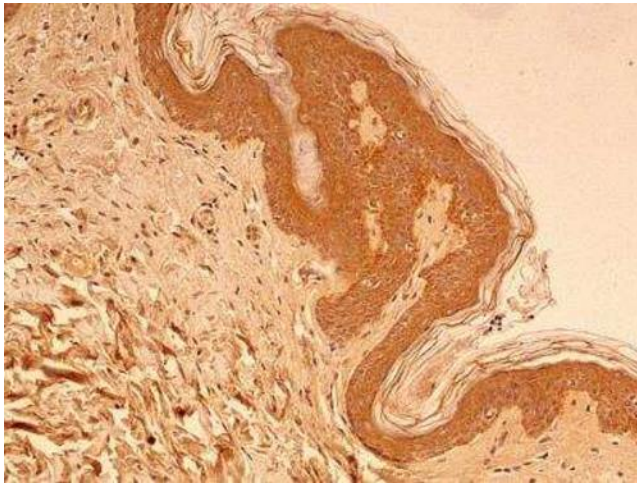
Immunocytochemistry/Immunofluorescence: beta Tubulin Antibody TA301569 - Confocal immunofluorescent analysis of C2C12 cells using beta Tubulin antibody (TA301569, 1:5). An Alexa Fluor 488-conjugated Goat to rabbit IgG was used as secondary antibody (green). Actin filaments were labeled with Alexa Fluor 568 phalloidin (red). DAPI was used to stain the cell nuclei (blue).



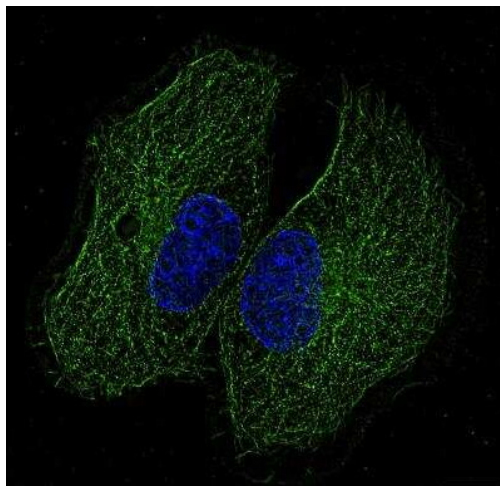
Immunohistochemistry-Paraffin: beta Tubulin Antibody TA301569 - Analysis of FFPE tissue section of human esophageal squamous cell carcinoma (SCC) using 1:2000 dilution of beta Tubulin antibody. This representative image shows a cytoplasm specific staining of beta Tubulin (TUBB) in SCC cells [60X Magnification].



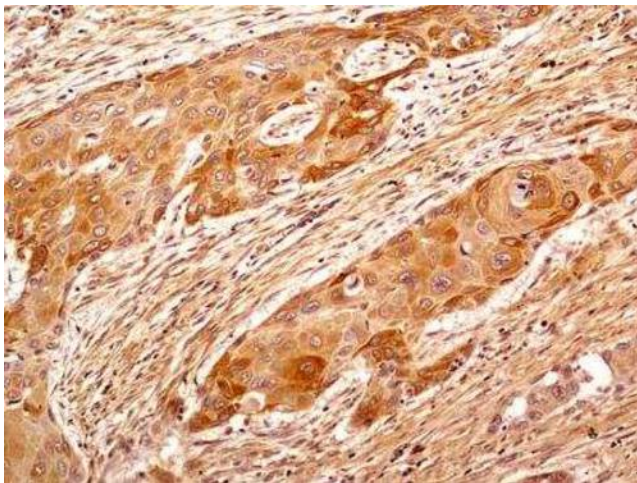
Immunocytochemistry/Immunofluorescence: beta Tubulin Antibody TA301569 - MCF7 cells were fixed in 4% paraformaldehyde for 10 minutes and permeabilized in 0.05% Triton X-100 in PBS for 5 minutes. The cells were incubated with anti- (TA301569) at 2 ug/ml overnight at 4C and detected with an anti-rabbit Dylight 488 (Green) at a 1:1000 dilution for 60 minutes. Nuclei were counterstained with DAPI (Blue). Cells were imaged using a 100X objective and digitally deconvolved.



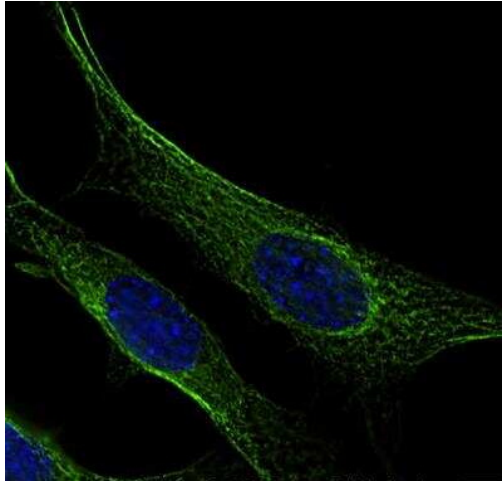
Immunohistochemistry-Paraffin: beta Tubulin Antibody TA301569 - Analysis of FFPE tissue section of normal human skin using 1:2000 dilution of beta Tubulin antibody. Intense cytoplasmic staining of beta Tubulin (TUBB) protein was observed in various cells of the epidermal as well as the dermal cells [10X Magnification].



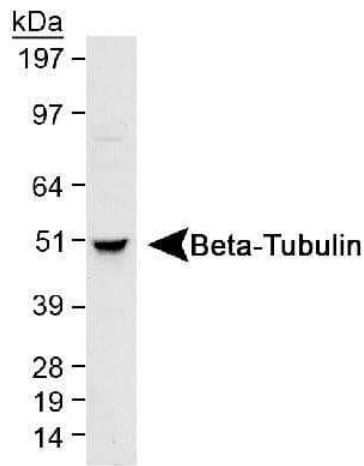
Immunocytochemistry/Immunofluorescence: beta Tubulin Antibody TA301569 - PC12 cells were fixed in 4% paraformaldehyde for 10 minutes and permeabilized in 0.05% Triton X-100 in PBS for 5 minutes. The cells were incubated with anti-beta Tubulin Antibody (TA301569) at 2 ug/ml overnight at 4C and detected with an anti-rabbit Dylight 488 (Green) at a 1:1000 dilution for 60 minutes. Nuclei were counterstained with DAPI (Blue). Cells were imaged using a 100X objective and digitally deconvolved.



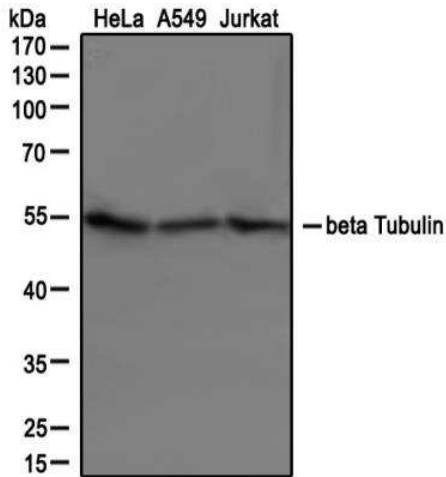
Immunohistochemistry-Paraffin: beta Tubulin Antibody TA301569 - Analysis of FFPE tissue section of human esophageal squamous cell carcinoma (SCC) using 1:2000 dilution of beta Tubulin antibody. Strong cytoplasmic immunopositivity of beta Tubulin (TUBB) was observed in SCC cells as well as the associated tumor stromal cells [10X Magnification].



Immunocytochemistry/Immunofluorescence: beta Tubulin Antibody TA301569 - NIH3T3 cells were fixed in 4% paraformaldehyde for 10 minutes and permeabilized in 0.05% Triton X-100 in PBS for 5 minutes. The cells were incubated with anti-beta Tubulin Antibody (TA301569) at 2 ug/ml overnight at 4C and detected with an anti-rabbit Dylight 488 (Green) at a 1:1000 dilution for 60 minutes. Nuclei were counterstained with DAPI (Blue). Cells were imaged using a 100X objective and digitally deconvolved.



Western Blot: beta Tubulin Antibody TA301569 - Analysis in HeLa whole cell lysate at a 1:1,000 dilution.



Western Blot: beta Tubulin Antibody TA301569 - Analysis of extracts from HeLa, A549 and Jurkat cells using TA301569 Beta-tubulin antibody at 1:1000