

Product datasheet for **TA301566**

Macrophage Scavenger Receptor I (MSR1) Rabbit Polyclonal Antibody

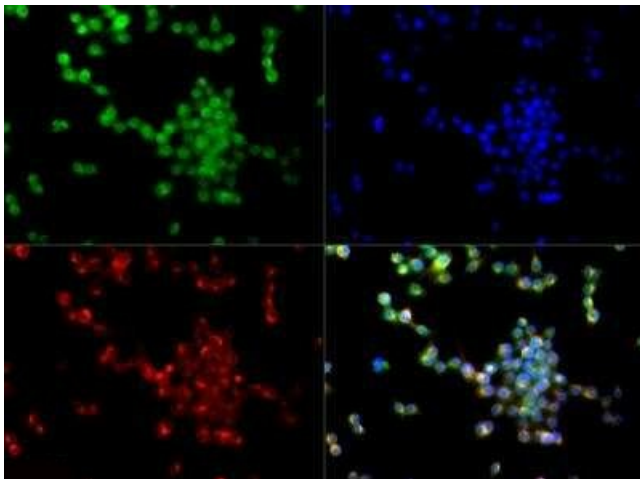
Product data:

Product Type:	Primary Antibodies
Applications:	ICC/IF, WB
Recommended Dilution:	Western Blot: 2 ug/mL, Immunocytochemistry/ Immunofluorescence: 1:50 - 1:200
Reactivity:	Human, Mouse
Host:	Rabbit
Isotype:	IgG
Clonality:	Polyclonal
Immunogen:	A synthetic peptide made to an internal portion of the human MSR protein sequence (between residues 300-400). UniProt P21757
Formulation:	Tris-glycine and 150mM NaCl and 0.05% sodium azide
Purification:	peptide affinity purified
Conjugation:	Unconjugated
Storage:	Store at -20°C as received.
Stability:	Stable for 12 months from date of receipt.
Gene Name:	macrophage scavenger receptor 1
Database Link:	NP_619729 Entrez Gene 20288 Mouse Entrez Gene 4481 Human P21757
Background:	Macrophage scavenger receptors (MSR) are membrane glycoproteins that mediate the recognition and uptake of a variety of macromolecules, including modified lipoproteins, advanced glycation end (AGEs) products and amyloid b-protein (Abeta). While the normal role of MSR is associated with cell adhesion and host defense mechanisms, it also has been implicated in the development of atherosclerosis and Abeta deposition in Alzheimer's disease (AD).
Synonyms:	CD204; phSR1; phSR2; SCARA1; SR-A; SRA
Protein Families:	Druggable Genome, Transmembrane

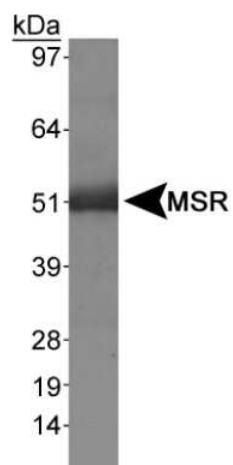


[View online »](#)

Product images:



Immunocytochemistry/Immunofluorescence: SR-AI/MSR Antibody TA301566 - Antibody was tested in Raw cells at a 1:50 dilution against Dylight 488 (Green). Alpha-tubulin and nuclei were counterstained against Dylight 550 (Red) and DAPI (Blue), respectively.



Western Blot: SR-AI/MSR Antibody TA301566 - Detection of MSR in human liver using TA301566.