

Product datasheet for **TA301565**

DLX4 Rabbit Polyclonal Antibody

Product data:

Product Type:	Primary Antibodies
Applications:	ChIP, IHC, IP, WB
Recommended Dilution:	Immunohistochemistry: 1:50-1:100, Immunoprecipitation: 1:10-1:500, Western Blot: 1:1000, Immunohistochemistry-Paraffin: 1:50-1:100, Immunohistochemistry-Frozen, Chromatin Immunoprecipitation (ChIP)
Reactivity:	Human
Host:	Rabbit
Isotype:	IgG
Clonality:	Polyclonal
Immunogen:	A synthetic peptide made specifically to the human BP1 protein sequence (between residues 1-60). There is no homology with the peptide sequences used for immunogen of this antibody and the DLX4 or DLX7 proteins.
Formulation:	Tris-citrate/phosphate, pH 7-8, 0.1% sodium Azide
Concentration:	lot specific
Purification:	Immunogen affinity purified
Conjugation:	Unconjugated
Storage:	Store at -20°C as received.
Stability:	Stable for 12 months from date of receipt.
Predicted Protein Size:	26 kDa
Gene Name:	distal-less homeobox 4
Database Link:	NP_612138 Entrez Gene 1748 Human Q92988



[View online »](#)

Background:

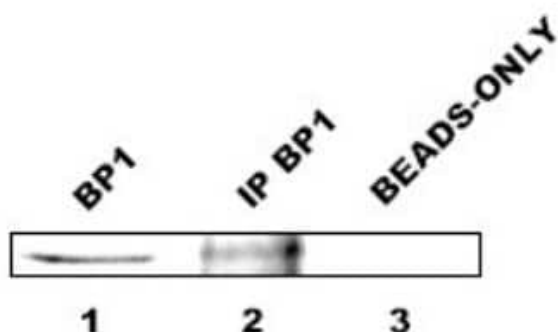
DLX (Distal-less) genes are essential for early development. BP1 (beta protein 1) is a homeodomain-containing isoform of DLX4. Strong BP1 expression is seen in placenta and kidney tissue, with no expression found in any other tissue (1). This protein has been shown to be activated in 80% of invasive ductal breast tumors and is associated with breast cancer progression (2, 3). It is also expressed in the bone marrows of 63% of acute myeloid leukemia (AML) patients (4). In addition, BP1 plays a role in globin gene regulation by repressing the beta- globin gene (1).

Synonyms:

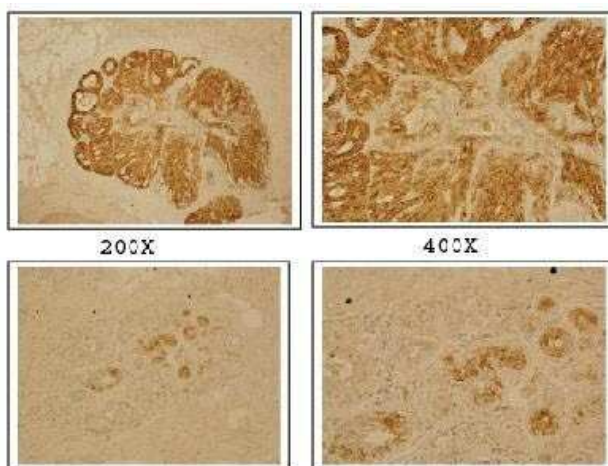
BP1; DLX7; DLX8; DLX9; OFC15

Protein Families:

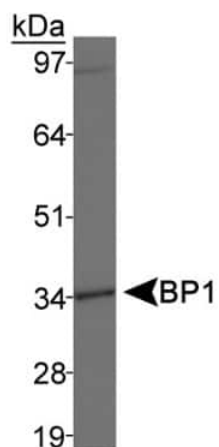
Transcription Factors

Product images:


Immunoprecipitation: BP1 Antibody TA301565 - Antibody diluted 1:5,000 2. BP1-specific band after immunoprecipitation of 850 ug of cell extract using anti-BP1 (TA301565) antibody diluted 1:1,000 3. Negative control for IP in lane 2: cell extract incubated with 50ul of Protein A/G beads.



Immunohistochemistry-Frozen: BP1 Antibody TA301565 - Top Panel: BP1 antibody detected in breast cancer cells. Bottom Panel: Staining of normal breast tissue.



Western Blot: BP1 Antibody TA301565 - Detection of MDA-MB-231 cell lysates.



Effect of BP1 on TNF α -induced cell death. (a) Western blot analysis of Beta Protein 1 (BP1) protein expression in MCF7/EV cell lines and MCF7/BP1 cell lines.