

Product datasheet for **TA301564**

CREB1 Rabbit Polyclonal Antibody

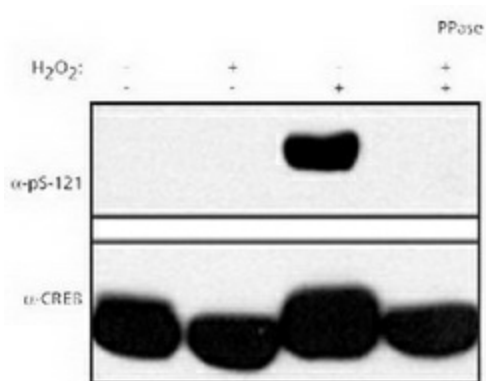
Product data:

Product Type:	Primary Antibodies
Applications:	WB
Recommended Dilution:	WB: 1:500, IP:5 ug/ml
Reactivity:	Human, Mouse
Modifications:	Phospho-specific
Host:	Rabbit
Isotype:	IgG
Clonality:	Polyclonal
Immunogen:	A phospho-peptide spanning the Ser-121 phosphorylation site of human CREB.
Formulation:	Tris 50% glycerol and 0.05% sodium azide
Concentration:	lot specific
Conjugation:	Unconjugated
Storage:	Store at -20°C as received.
Stability:	Stable for 12 months from date of receipt.
Gene Name:	cAMP responsive element binding protein 1
Database Link:	NP_004370 Entrez Gene 12912 Mouse Entrez Gene 1385 Human P16220
Background:	Cyclic AMP Response Element Binding protein (CREB) is a basic / leucine zipper transcription factor that binds the cyclic AMP response element (CRE) and activates transcription in response to a variety of extracellular signals including neurotransmitters, hormones, membrane depolarization, and growth and neurotrophic factors. CREB is also regulated by DNA-damaging stimuli and is directly phosphorylated on Ser-121 by the ataxia-telangiectasia-mutated protein kinase, ATM in response to ionizing radiation.
Synonyms:	CREB
Protein Families:	Druggable Genome, Transcription Factors
Protein Pathways:	Antigen processing and presentation, Huntington's disease, Melanogenesis, Prostate cancer



[View online »](#)

Product images:



Detection of phospho-CREB in human HEK 293T cells. Top panel: probed with phospho-CREB. Bottom panel: probed with CREB antibody. Lanes 2 and 4 treated with lambda phosphatase, lanes 3 and 4 treated with 0.2mM H₂O₂.