

Product datasheet for **TA301554**

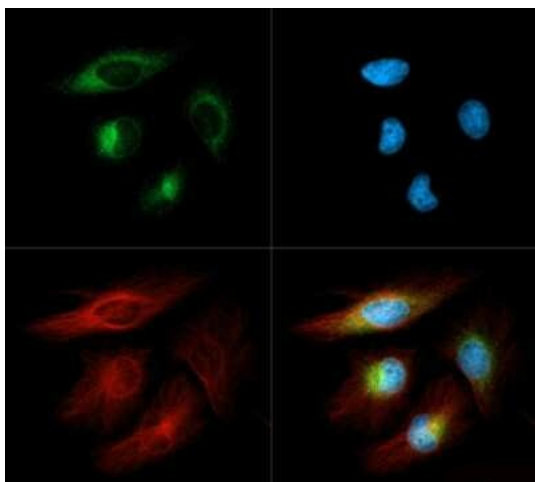
DERL1 Rabbit Polyclonal Antibody

Product data:

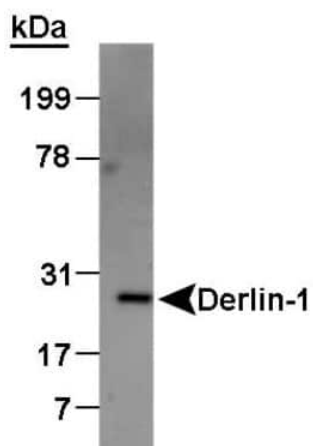
Product Type:	Primary Antibodies
Applications:	ICC/IF, IHC, WB
Recommended Dilution:	Immunohistochemistry: 5-10 ug/ml, Immunocytochemistry/ Immunofluorescence: 1:2000, Western Blot: 1:1000-1:5000, Immunohistochemistry-Paraffin: 5-10 ug/ml
Reactivity:	Human, Dog
Host:	Rabbit
Isotype:	IgG
Clonality:	Polyclonal
Immunogen:	A synthetic peptide made to the C-terminal region of the human Derlin-1 protein sequence (between residues 200-251).
Formulation:	Tris-citrate/phosphate, pH 7-8, 0.1% sodium Azide
Purification:	Immunogen affinity purified
Conjugation:	Unconjugated
Storage:	Store at -20°C as received.
Stability:	Stable for 12 months from date of receipt.
Gene Name:	derlin 1
Database Link:	NP_077271 Entrez Gene 475086 Dog Entrez Gene 79139 Human Q9BUN8
Background:	Derlin-1 is a channel-like protein, found in the ER membrane, responsible for degrading and funneling misfolded proteins and other cellular debris into the appropriate degradative pathways within the cell.
Synonyms:	DER-1; DER1; derlin-1
Protein Families:	Druggable Genome, Transmembrane
Protein Pathways:	Amyotrophic lateral sclerosis (ALS)



[View online »](#)

Product images:

Immunocytochemistry/Immunofluorescence: Derlin 1 Antibody TA301554 - Derlin-1 antibody was tested in HeLa cells with Dylight 488 (green). Nuclei and alpha-tubulin were counterstained with DAPI (blue) and Dylight 550 (red).



Western Blot: Derlin 1 Antibody TA301554 - Detection of Derlin protein in canine KRM microsomes.



Immunohistochemistry: Derlin 1 Antibody
TA301554 - Staining of human liver.