

Product datasheet for **TA301540**

CERK Rabbit Polyclonal Antibody

Product data:

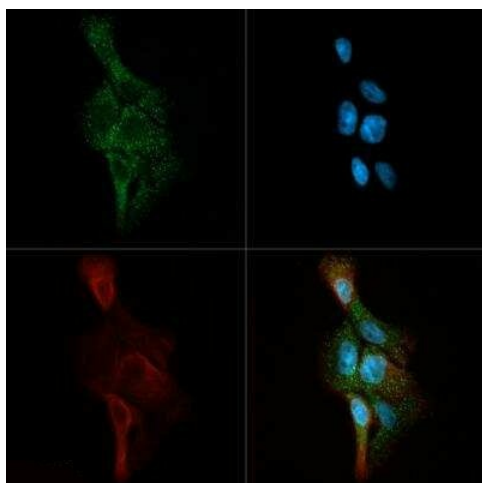
Product Type:	Primary Antibodies
Applications:	ICC/IF, WB
Recommended Dilution:	Immunocytochemistry/ Immunofluorescence: 1:500-1:2000, Western Blot: 2 ug/ml
Reactivity:	Human
Host:	Rabbit
Isotype:	IgG
Clonality:	Polyclonal
Immunogen:	A synthetic peptide made to an internal portion of the human ceramide kinase protein sequence (between residues 50-150). [Swiss-Prot Q8TCT0]
Formulation:	Tris-glycine, 150mM NaCl and 0.05% sodium azide
Concentration:	lot specific
Purification:	peptide affinity purified
Conjugation:	Unconjugated
Storage:	Store at -20°C as received.
Stability:	Stable for 12 months from date of receipt.
Gene Name:	ceramide kinase
Database Link:	NP_073603 Entrez Gene 64781 Human Q8TCT0
Background:	Ceramide kinase (CERK) is a novel lipid kinase. It is responsible for catalyzing the phosphorylation that produces a signaling lipid called ceramide-1-phosphate (C1P). C1P is an important biological mediator that induces inflammatory pathways such as those blocked by many allergy medications. Findings suggest that CERK could be a novel target for a new generation of anti-inflammatory/anti-trauma therapeutics dealing with such conditions as arthritis, asthma, multiple sclerosis, lung and colon cancers and Alzheimer's disease.
Synonyms:	dA59H18.2; dA59H18.3; hCERK; LK4
Protein Families:	Druggable Genome



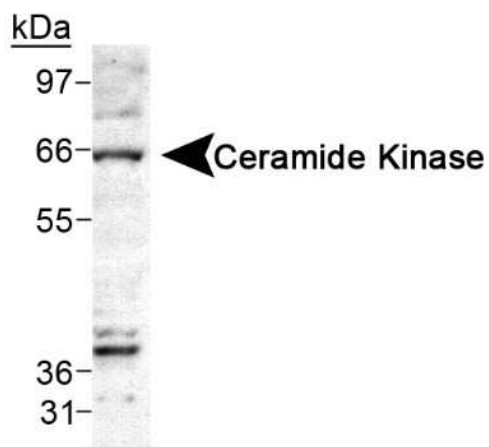
[View online »](#)

Protein Pathways: Metabolic pathways, Sphingolipid metabolism

Product images:



Immunocytochemistry/Immunofluorescence: Ceramide Kinase Antibody TA301540 - Ceramide Kinase antibody was tested in A431 cells with DyLight 488 (green). Nuclei and alpha-tubulin were counterstained with DAPI (blue) and DyLight 550 (red).



Western Blot: Ceramide Kinase Antibody TA301540 - Detection of Ceramide Kinase in A549 cell lysate using TA301540.