

## Product datasheet for **TA301538**

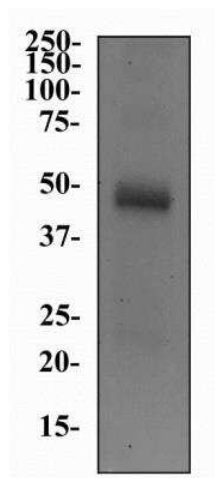
### SLC5A7 Mouse Monoclonal Antibody [Clone ID: 62-2E8]

#### Product data:

Product Type:	Primary Antibodies
Clone Name:	62-2E8
Applications:	IHC, WB
Recommended Dilution:	Immunohistochemistry: 1:500, Western Blot: 1:500, Immunohistochemistry-Paraffin: 1:500, Immunohistochemistry-Frozen: 1:500
Reactivity:	Human, Mouse, Rat
Host:	Mouse
Isotype:	IgG1
Clonality:	Monoclonal
Immunogen:	Recombinant fusion protein from the C-terminal portion of the human CHT protein.
Formulation:	PBS and 0.05% sodium azide
Purification:	Ascites
Conjugation:	Unconjugated
Storage:	Store at -20°C as received.
Stability:	Stable for 12 months from date of receipt.
Gene Name:	solute carrier family 5 member 7
Database Link:	<a href="#">NP_068587</a> <a href="#">Entrez Gene 63993 Mouse</a> <a href="#">Entrez Gene 85426 Rat</a> <a href="#">Entrez Gene 60482 Human</a> <a href="#">Q9GZV3</a>
Background:	Acetylcholine functions as a neurotransmitter in both the central and peripheral nervous systems of all vertebrates, and is the principle neurotransmitter used at the neuromuscular junction. Presynaptic synthesis of acetylcholine requires a steady supply of choline, which is acquired by a plasma membrane high affinity choline transporter (CHT).
Synonyms:	CHT; CHT1; hCHT; HMN7A
Protein Families:	Transmembrane



[View online »](#)

**Product images:**

Western Blot: CHT1 Antibody (62-2E8) TA301538 - Western Blot Image of anti-CHT1 (62-2E8). Total protein from mouse brain was separated on a 12% gel by SDS-PAGE, transferred to PVDF membrane and blocked in 5% non-fat milk in TBST. The membrane was probed with a 1:500 dilution of anti-CHT1 in 1% milk/TBST. Reactivity was detected with an anti-mouse HRP secondary antibody using chemiluminescence.



Immunohistochemistry: CHT1 Antibody (62-2E8) TA301538 - Staining of neurons in rat basal forebrain