

Product datasheet for **TA301535**

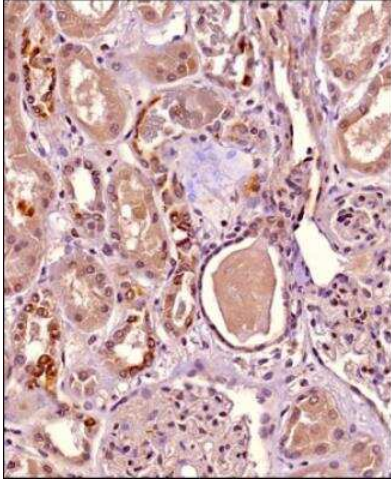
HIPPI (IFT57) Mouse Monoclonal Antibody [Clone ID: 1E1]

Product data:

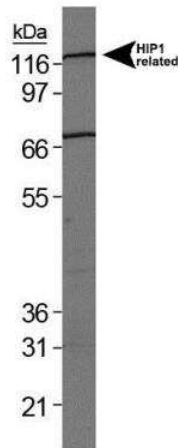
Product Type:	Primary Antibodies
Clone Name:	1E1
Applications:	IHC, IP, WB
Recommended Dilution:	Western Blot: 1:1000, Immunoprecipitation, Immunohistochemistry, Immunohistochemistry-Paraffin
Reactivity:	Human, Rat
Host:	Mouse
Isotype:	IgG1, kappa
Clonality:	Monoclonal
Immunogen:	Human HIP1r-TALIN Homology Region (57 kDa).
Conjugation:	Unconjugated
Storage:	Store at -20°C as received.
Stability:	Stable for 12 months from date of receipt.
Gene Name:	intraflagellar transport 57
Database Link:	NP_060480 Entrez Gene 303968 Rat Entrez Gene 55081 Human Q9NWB7
Background:	Huntingtin disease, a neurodegenerate disease, is caused by the expansion of a polymorphic glutamine tract in huntingtin. The Huntingtin Interacting Protein 1 (HIP-1) is a reportedly proapoptotic, cargo-specific adaptor protein that may be involved in the pathogenesis of Huntingtin disease. As well as playing a role in Huntingtin disease, it is likely to be involved in the recruitment of clathrin coats to lipid membranes and it may also factor in tumorigenesis by allowing the survival of precancerous and cancerous cells. Since HIP-1 expression is significantly associated with prostate and colon cancer metastasis, HIP-1 can serve as a putative prognostic factor for prostate and colon cancers.
Synonyms:	ESRRBL1; HIPPI; MHS4R2
Protein Families:	Druggable Genome
Protein Pathways:	Huntington's disease



[View online »](#)

Product images:

Immunohistochemistry-Paraffin: HIP1 Related Antibody (1E1) TA301535 - Analysis of a FFPE tissue section of human kidney using 1:200 concentration of HIP1 Related antibody. The staining was developed using HRP labeled anti-rabbit secondary antibody and DAB reagent, and nuclei of cells were counter-stained with hematoxylin. This HIP1 related antibody generated strong staining of the cytoplasm and membrane.



Western Blot: HIP1 Related Antibody (1E1) TA301535 - Analysis of HIP1 Related on HeLa whole cell extract.