

Product datasheet for **TA301533**

HIF1AN Rabbit Polyclonal Antibody

Product data:

Product Type:	Primary Antibodies
Applications:	Electron Microscopy, ICC/IF, IHC, IP, WB
Recommended Dilution:	Immunohistochemistry: 1:100, Immunocytochemistry/ Immunofluorescence, Immunoprecipitation: 1:10-1:500, Electron Microscopy, Immunohistochemistry-Paraffin: 1:50-1:200, Immunohistochemistry-Frozen: 1:50-1:200, Western Blot: 1:1000-1:5000, Knockdown Validated, Knockout Validated
Reactivity:	Human, Rat
Host:	Rabbit
Isotype:	IgG
Clonality:	Polyclonal
Immunogen:	A C-terminal region synthetic peptide made to the human FIH protein sequence (between residues 300 and the C-terminus).
Formulation:	Tris-citrate/phosphate [pH 7-8] buffer. and 0.1% Sodium Azide
Concentration:	lot specific
Purification:	Immunogen affinity purified
Conjugation:	Unconjugated
Storage:	Store at -20°C as received.
Stability:	Stable for 12 months from date of receipt.
Gene Name:	hypoxia inducible factor 1 alpha subunit inhibitor
Database Link:	NP_060372 Entrez Gene 309434 RatEntrez Gene 55662 Human Q9NWT6

Background: Factor Inhibiting HIF1 (FIH) protein facilitates repression of HIF-1 transcriptional activity by binding to VHL, which acts as a transcriptional corepressor. VHL inhibits HIF-1 alpha transactivation function by recruiting histone deacetylases. Involvement of VHL in association with FIH provides a unifying mechanism for the modulation of HIF-1 alpha protein stabilization and transcriptional activation in response to changes in cellular oxygen concentration.

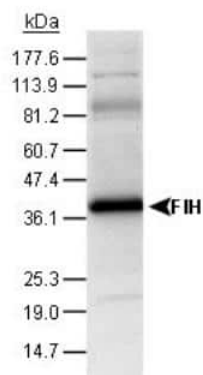


[View online »](#)

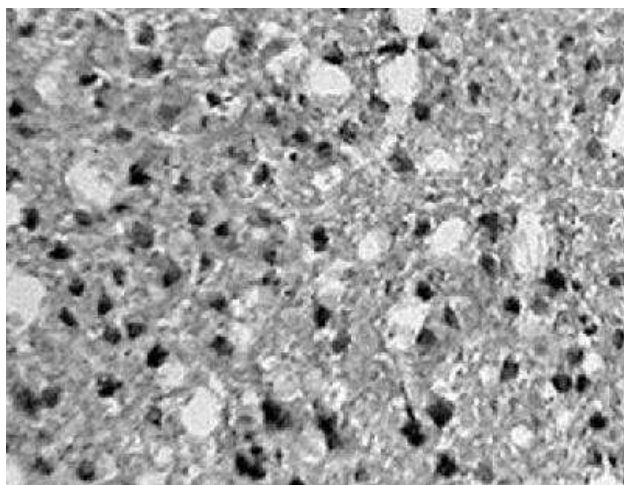
Synonyms: FIH1

Protein Families: Druggable Genome

Product images:



Western Blot: FIH-1/HIF-1AN Antibody TA301533 - Analysis of astrocytes lysate from Rat brain using FIH-1/HIF-1AN antibody at 1:500 dilution with ECL detection. The antibody detected a major band at ~40 kDa position representing FIH-1/HIF-1AN protein.



Immunohistochemistry: FIH-1/HIF-1AN Antibody TA301533 - Detection of FIH-1 in rat brain tissue.