

Product datasheet for **TA301524**

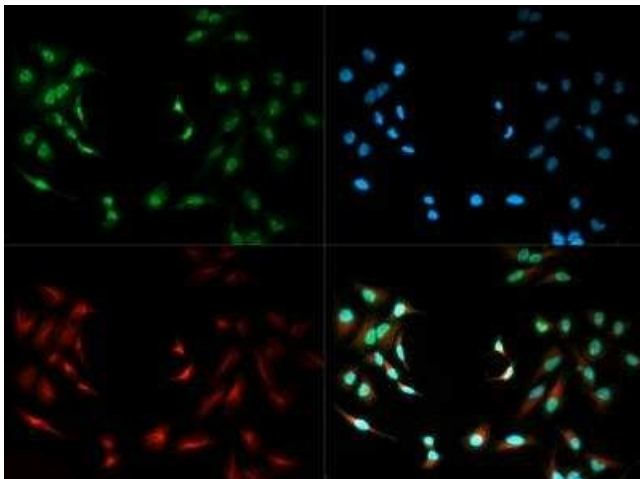
SIRT6 Rabbit Polyclonal Antibody

Product data:

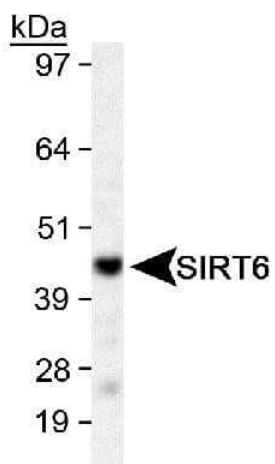
Product Type:	Primary Antibodies
Applications:	ICC/IF, WB
Recommended Dilution:	Immunocytochemistry/ Immunofluorescence: 1:500, Western Blot: 2 ug/ml
Reactivity:	Human
Host:	Rabbit
Isotype:	IgG
Clonality:	Polyclonal
Immunogen:	A synthetic peptide made to a C-terminal region of the human SIRT6 protein (within residues 300-355). [Swiss-Prot Q8N6T7]
Formulation:	Tris-citrate/phosphate (pH 7-8) and 0.1% sodium azide
Concentration:	lot specific
Purification:	Affinity purified
Conjugation:	Unconjugated
Storage:	Store at -20°C as received.
Stability:	Stable for 12 months from date of receipt.
Gene Name:	sirtuin 6
Database Link:	NP_057623 Entrez Gene 51548 Human Q8N6T7
Background:	Sirtuins regulate epigenetic gene silencing. SIRT6 (Mono-ADP-ribosyltransferase sirtuin-6), a mouse Sir2 homolog, is a chromatin-associated nuclear ADP-ribosyltransferase protein. It appears to be involved in DNA repair and may also play a role in human ageing.
Synonyms:	SIR2L6
Protein Families:	Druggable Genome, Transcription Factors



[View online »](#)

Product images:

Immunocytochemistry/Immunofluorescence: SIRT6 Antibody TA301524 - SIRT6 antibody was tested in HeLa cells with DyLight 488 (green). Nuclei and alpha-tubulin were counterstained with DAPI (blue) and Dylight 550 (red).



Western Blot: SIRT6 Antibody TA301524 - Detection of SIRT6 in HeLa whole cell lysate.