

Product datasheet for **TA301522**

ABHD5 Rabbit Polyclonal Antibody

Product data:

Product Type:	Primary Antibodies
Applications:	Simple Western, WB
Recommended Dilution:	Western Blot: 1:500, Simple Western: 1:1000
Reactivity:	Human
Host:	Rabbit
Isotype:	IgG
Clonality:	Polyclonal
Immunogen:	A synthetic peptide made to an internal region within residues 200-300 of the human protein. [Swiss-Prot# Q8WTS1]
Formulation:	Tris-glycine, 150mM NaCl and 0.05% sodium azide
Concentration:	lot specific
Purification:	peptide affinity purified
Conjugation:	Unconjugated
Storage:	Store at -20°C as received.
Stability:	Stable for 12 months from date of receipt.
Gene Name:	abhydrolase domain containing 5
Database Link:	NP_057090 Entrez Gene 51099 Human Q8WTS1
Background:	The CGI-58 protein belongs to a large family of proteins characterized by an ??hydrolase fold. CGI-58 protein is involved in the lipid metabolism of lamellar granules. Defective lipid production in lamellar granules, caused by a CGI-58 protein deficiency, is involved in the pathogenesis of ichthyosis in Dorfman?hanarin syndrome. Dorfman?hanarin syndrome is a rare autosomal recessive inherited lipid storage disease characterized by the presence of intracellular lipid droplets in most tissues.
Synonyms:	CDS; CGI58; IECN2; NCIE2
Protein Families:	Protease



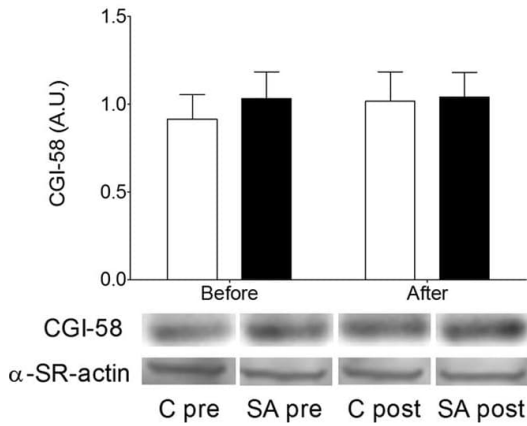
[View online »](#)

Product images:

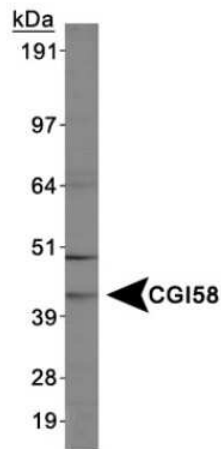


Simple Western: Abhd5 Antibody TA301522 - Image shows a specific band for Abhd5 in 0.5 mg/mL of MCF-7 lysate. This experiment was performed under reducing conditions using the 12-230 kDa separation system.

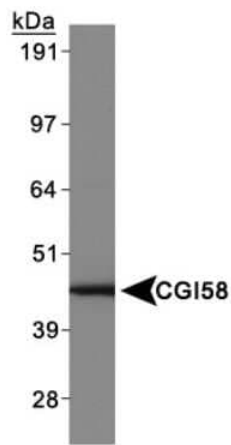
b



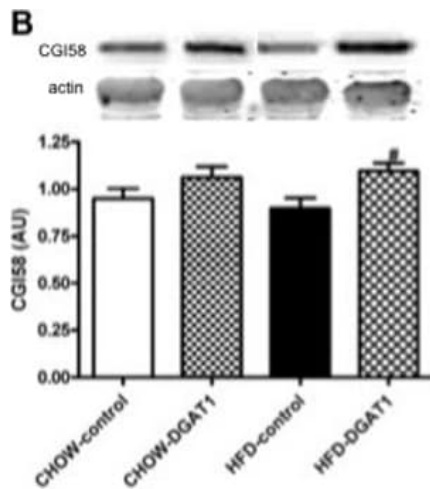
Protein content of important players involved in lipid droplet dynamics in Caucasian and South Asian subjects before and after a 5-day HFHC diet. (a) ATGL, (b) CGI-58, (c) PLIN2, (d) PLIN3 and (e) PLIN5 protein content. Data are presented as mean ± SEM and were statistically analyzed with a Repeated Measures ANOVA; *P < 0.05 for diet effect, #P < 0.05 for group effect.



Western Blot: Abhd5 Antibody TA301522 - MCF7 cell lysates.



Western Blot: Abhd5 Antibody TA301522 - Abhd5 overexpression lysates (NBL1-07199).



The turnover of DAG and TAG is increased in the DGAT1 overexpressing TA muscle. (A) Western blotting of ATGL, (B) CGI58 (C) and ADRP in rat TA muscle. Data are expressed as mean \pm SEM (n = 10-12). # P < 0.05 HFD-DGAT1 vs. HFD-control.