

Product datasheet for **TA301520**

POT1 Rabbit Polyclonal Antibody

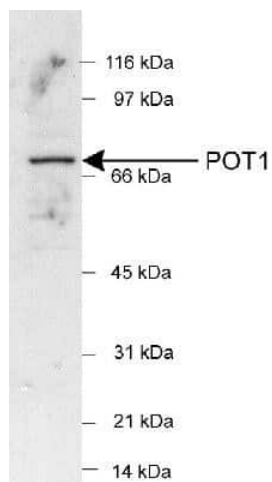
Product data:

Product Type:	Primary Antibodies
Applications:	WB
Recommended Dilution:	Western Blot: 1 - 2 ug/ml
Reactivity:	Human
Host:	Rabbit
Isotype:	IgG
Clonality:	Polyclonal
Immunogen:	A synthetic peptide made to an internal portion of the human POT1 protein sequence (between residues 200-300).
Formulation:	Tris-glycine and 150mM NaCl and Sodium Azide
Concentration:	lot specific
Purification:	Affinity purified
Conjugation:	Unconjugated
Storage:	Store at -20°C as received.
Stability:	Stable for 12 months from date of receipt.
Gene Name:	protection of telomeres 1
Database Link:	NP_056265 Entrez Gene 25913 Human Q9NUX5
Background:	Telomere maintenance is essential for protection against changes in telomere length, which has been implicated in ageing and certain cancers. POT1 (protection of telomeres 1), a telomere regulator, is a single-stranded telomeric DNA-binding protein that controls telomerase-mediated telomere elongation.
Synonyms:	CMM10; GLM9; HPOT1



[View online »](#)

Product images:



Western Blot: POT1 Antibody TA301520 -
Detection of POT1 in HeLa nuclear extracts (25
ug) using TA301520(1:500). ECL detection 1 min.