

## Product datasheet for **TA301519**

### **Bcl2 Binding component 3 (BBC3) Rabbit Polyclonal Antibody**

#### **Product data:**

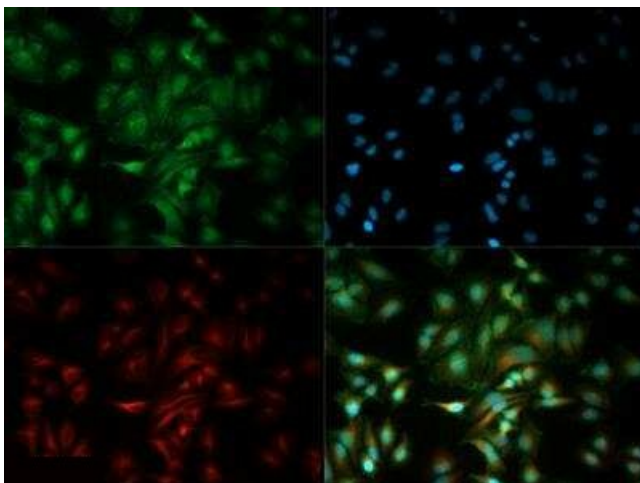
<b>Product Type:</b>	Primary Antibodies
<b>Applications:</b>	ICC/IF, WB
<b>Recommended Dilution:</b>	Immunocytochemistry/ Immunofluorescence: 1:20-1:100, Western Blot: 2-4 ug/ml
<b>Reactivity:</b>	Human
<b>Host:</b>	Rabbit
<b>Isotype:</b>	IgG
<b>Clonality:</b>	Polyclonal
<b>Immunogen:</b>	A synthetic peptide made to a region within the C-terminus of the human PUMA protein sequence (between residues 150-193).
<b>Formulation:</b>	Tris-glycine, 150 mM NaCl, 0.05% sodium azide
<b>Concentration:</b>	lot specific
<b>Purification:</b>	Immunogen affinity purified
<b>Conjugation:</b>	Unconjugated
<b>Storage:</b>	Store at -20°C as received.
<b>Stability:</b>	Stable for 12 months from date of receipt.
<b>Gene Name:</b>	BCL2 binding component 3
<b>Database Link:</b>	<a href="#">NP_055232</a> <a href="#">Entrez Gene 27113 Human</a> <a href="#">Q96PG8</a>
<b>Background:</b>	A novel gene PUMA (p53 upregulated modulator of apoptosis) is a target for activation by the p53 tumor-suppressor gene. p53 functions as a transcriptional activator, and influences p53-inducible genes that play a role in the induction of apoptosis in response to p53. Antisense inhibition of PUMA expression reduced the apoptotic response to p53, and PUMA is likely to play a role in mediating p53-induced cell death through the cytochrome c/Apaf-1-dependent pathway.
<b>Synonyms:</b>	JFY-1; JFY1; PUMA
<b>Protein Families:</b>	Druggable Genome



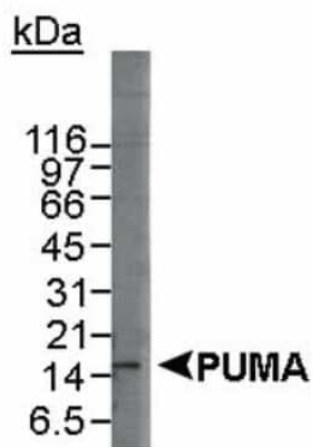
[View online »](#)

Protein Pathways: Huntington's disease, p53 signaling pathway

### Product images:



Immunocytochemistry/Immunofluorescence: PUMA Antibody TA301519 - The PUMA antibody was tested at a 1:20 dilution in HeLa cells against Dylight 488 (Green). Alpha-tubulin and nuclei were counterstained against Dylight 550 (Red) and DAPI (Blue).



Western Blot: PUMA Antibody TA301519 - Detection of the beta isoform of PUMA in HL-60 whole cell lysate using NB 500-261(4 ug/ml). ECL detection at a 30 minute exposure.