

## Product datasheet for **TA301507**

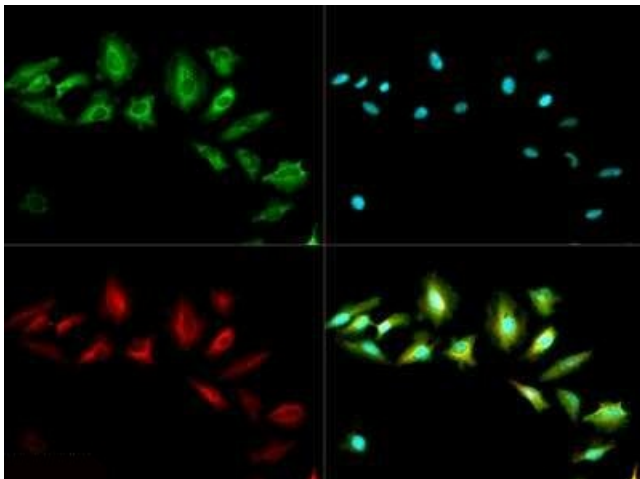
### ABCF2 Rabbit Polyclonal Antibody

#### Product data:

Product Type:	Primary Antibodies
Applications:	ICC/IF, Simple Western, WB
Recommended Dilution:	Knockdown Validated, Simple Western: 1:1000, Immunocytochemistry/ Immunofluorescence: 1:500, Western Blot: 1:500-1:1000
Reactivity:	Human, Yeast
Host:	Rabbit
Isotype:	IgG
Clonality:	Polyclonal
Immunogen:	A fusion protein containing amino acids 1-102 of the ABCF2 protein.
Formulation:	0.05% Sodium azide
Conjugation:	Unconjugated
Storage:	Store at -20°C as received.
Stability:	Stable for 12 months from date of receipt.
Gene Name:	ATP binding cassette subfamily F member 2
Database Link:	<a href="#">NP_009120</a> <a href="#">Entrez Gene 10061 Human</a> <a href="#">Q9UG63</a>
Background:	ABCF2 is a member of the ABC Transporter superfamily and of the GCN20 subfamily. As a member of the ABC Transporter family, it functions to transport various molecules across extra- and intracellular membranes.
Synonyms:	ABC28; EST133090; HUSSY-18; HUSSY18
Protein Families:	Druggable Genome



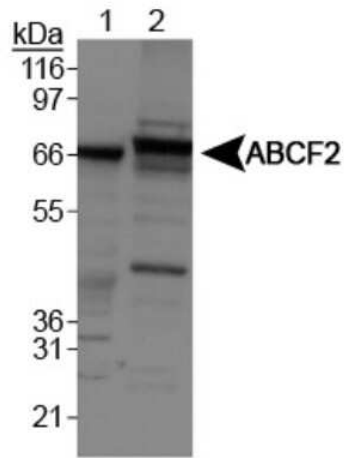
[View online »](#)

**Product images:**

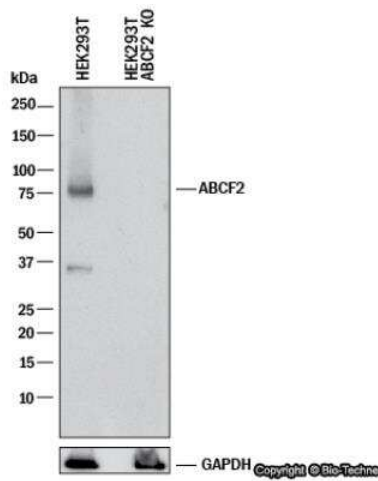
Immunocytochemistry/Immunofluorescence: ABCF2 Antibody TA301507 - ABCF2 antibody was tested in HeLa cells with DyLight 488 (green). Nuclei and alpha-tubulin were counterstained with DAPI (blue) and Dylight 550 (red).



Simple Western: ABCF2 Antibody TA301507 - Simple Western lane view shows a specific band for ABCF2 in 0.05 mg/ml of HeLa lysate. This experiment was performed under reducing conditions using the 12-230 kDa separation system.



Western Blot: ABCF2 Antibody TA301507 - Analysis of ABCF2 on Lane 1: HeLa whole cell extracts and Lane 2: NIH/3T3 cell lysates using TA301507.



Knockdown Validated: ABCF2 Antibody TA301507 - Western blot shows lysates of HEK293T human embryonic kidney parental cell line and ABCF2 knockout (KO) HEK293T cell line. PVDF membrane was probed with 1:1000 of Rabbit Anti-Human ABCF2 Polyclonal Antibody (Catalog # TA301507) followed by HRP-conjugated Anti-Rabbit IgG Secondary Antibody (Catalog #HAF008). Specific band was detected for ABCF2 at approximately 71 kDa (as indicated) in the parental HEK293T cell line, but is not detectable in the knockout HEK293T cell line. This experiment was conducted under reducing conditions.