

Product datasheet for **TA301503**

OS9 Rabbit Polyclonal Antibody

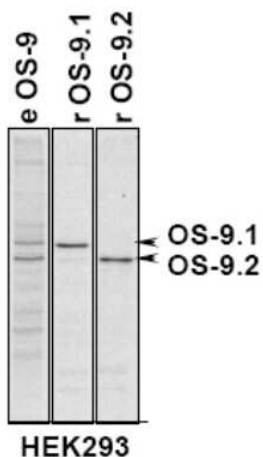
Product data:

Product Type:	Primary Antibodies
Applications:	ICC/IF, IHC, IP, WB
Recommended Dilution:	Immunohistochemistry-Paraffin: 1:100-1:250, Immunohistochemistry: 0.5-1.0 ug/ml, Immunocytochemistry/ Immunofluorescence: 0.2-1.0 ug/ml, Immunoprecipitation: 1:10-1:500, Western Blot: 0.2-1.0 ug/ml, Knockdown Validated
Reactivity:	Human, Mouse
Host:	Rabbit
Isotype:	IgG
Clonality:	Polyclonal
Immunogen:	Synthetic peptide made to an internal portion of isoform 1 of the human protein (within residues 300-400). [Swiss-Prot# Q13438]
Formulation:	Tris-citrate/phosphate [pH 7-8] and 0.01% sodium azide
Purification:	Affinity purified
Conjugation:	Unconjugated
Storage:	Store at -20°C as received.
Stability:	Stable for 12 months from date of receipt.
Gene Name:	OS9, endoplasmic reticulum lectin
Database Link:	NP_006803 Entrez Gene 216440 Mouse Entrez Gene 10956 Human Q13438
Background:	OS9 is an ER glycoprotein found in the intraluminal level and highly expressed in tumor tissue. The OS9 gene is transcriptionally induced upon activation of the Ire1/Xbp1 ER-stress pathway.
Synonyms:	ERLEC2; OS-9
Protein Families:	Transmembrane

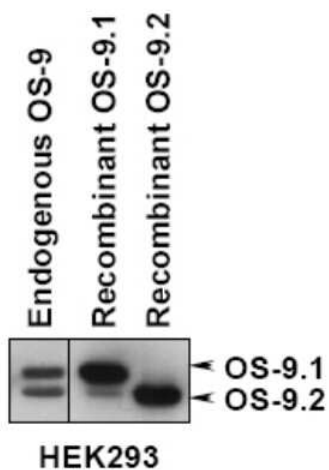


[View online »](#)

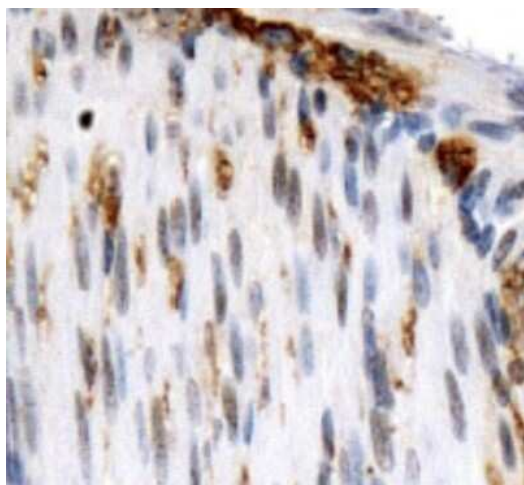
Product images:



Immunoprecipitation: OS9 Antibody TA301503 - Immunoprecipitation of OS-9.1 and OS-9.2 in total HEK293 cells, HEK293 cells expressing OS-9.1 or OS-9.2.



Western Blot: OS9 Antibody TA301503 - Detection of OS-9.1 and OS-9.2 in total HEK293 cells, HEK293 cells expressing OS-9.1 or OS-9.2 by western analysis.



Immunohistochemistry: OS9 Antibody TA301503
- Staining of OS9 in mouse smooth muscle.