

Product datasheet for **TA301495**

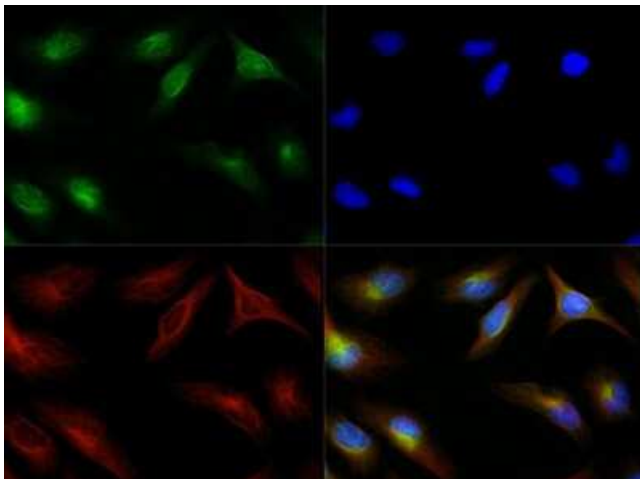
LIPG Rabbit Polyclonal Antibody

Product data:

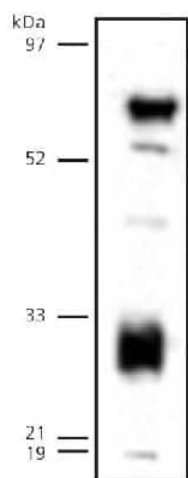
Product Type:	Primary Antibodies
Applications:	ICC/IF, IHC, WB
Recommended Dilution:	Immunocytochemistry/ Immunofluorescence: 1:100, Western Blot: 1:500, Immunohistochemistry, Immunohistochemistry-Frozen
Reactivity:	Human
Host:	Rabbit
Isotype:	IgG
Clonality:	Polyclonal
Immunogen:	A C-terminal synthetic peptide made to the human endothelial lipase protein sequence.
Formulation:	Tris-citrate/phosphate, pH 7-8, 0.1% sodium Azide
Concentration:	lot specific
Purification:	Immunogen affinity purified
Conjugation:	Unconjugated
Storage:	Store at -20°C as received.
Stability:	Stable for 12 months from date of receipt.
Gene Name:	lipase G, endothelial type
Database Link:	NP_006024 Entrez Gene 9388 Human Q9Y5X9
Background:	Endothelial lipase (EL) is a novel member of the lipoprotein lipase gene family. It is synthesized by endothelial cells and functions at the site of synthesis. EL most likely plays a physiological role in modulating lipoprotein metabolism. Overexpressed EL has been shown to reduce HDL cholesterol levels, whereas an EL deficiency appears to be effective in elevating HDL cholesterol levels in animals.
Synonyms:	EDL; EL; PRO719
Protein Families:	Druggable Genome, Secreted Protein
Protein Pathways:	Glycerolipid metabolism, Metabolic pathways



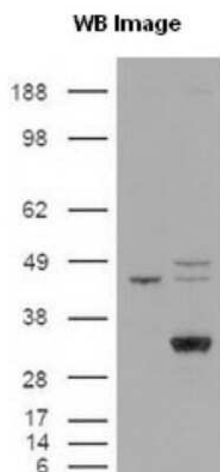
[View online »](#)

Product images:

Immunocytochemistry/Immunofluorescence:
Endothelial Lipase Antibody TA301495 - Antibody
was tested in HeLa cells with Dylight 488 (green).
Nuclei and alpha-tubulin were counterstained
with DAPI (blue) and Dylight 550 (red).



Western Blot: Endothelial Lipase Antibody
TA301495 - Human endothelial lipase detected in
transfected 293 lysates (MW 57 kDa)



Western Blot: Endothelial Lipase Antibody TA301495 - Cells were transfected with the pCMV6-ENTRY control or pCMV6-ENTRY LIPG cDNA for 48 hrs and lysed. Equivalent amounts of cell lysates (5 ug per lane) were separated by SDS-PAGE and immunoblotted with anti-LIPG.