

Product datasheet for **TA301494**

MAT2A Rabbit Polyclonal Antibody

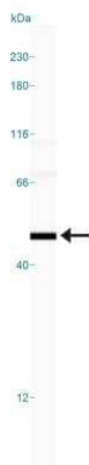
Product data:

Product Type:	Primary Antibodies
Applications:	Simple Western, WB
Recommended Dilution:	Western Blot: 2 ug/ml, Simple Western: 1:10
Reactivity:	Human, Rat, Bovine, Zebrafish, Orang-Utan, Monkey (Does not react with: Mouse)
Host:	Rabbit
Isotype:	IgG
Clonality:	Polyclonal
Immunogen:	Synthetic peptide made to an internal portion of the human MAT2A protein (within residues 100-200). [Swiss-Prot# P31153]
Formulation:	PBS, 30% glycerol and 0.1% sodium azide
Concentration:	lot specific
Purification:	peptide affinity purified
Conjugation:	Unconjugated
Storage:	Store at -20°C as received.
Stability:	Stable for 12 months from date of receipt.
Gene Name:	methionine adenosyltransferase 2A
Database Link:	NP_005902 Entrez Gene 171347 Rat Entrez Gene 232087 Mouse Entrez Gene 695362 Monkey Entrez Gene 4144 Human P31153
Background:	MAT1A and MAT2A are catalytic subunits of methionine adenosyltransferase (MAT), which catalyzes the formation of S-adenosyltransferase for methionine catabolism. Inactivation of MAT1A has been linked to liver disease. In addition, in certain liver cancers expression of MAT1A is replaced by expression of MAT1B. Overexpression of MAT2A has also been observed in colon cancer, leading to the proposal that MAT2A facilitates cancer cell growth.
Synonyms:	MATA2; MATII; SAMS2
Protein Pathways:	Cysteine and methionine metabolism, Metabolic pathways, Selenoamino acid metabolism

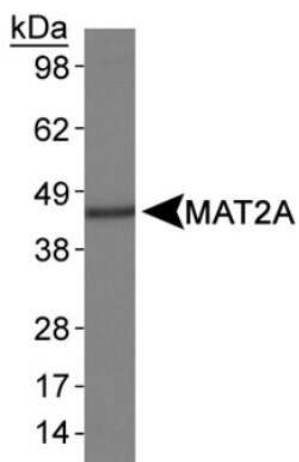


[View online »](#)

Product images:



Simple Western: MAT1/2A Antibody TA301494 - Simple Western lane view shows a specific band for MAT1/2 A in 0.5 mg/ml of HepG2 lysate. This experiment was performed under reducing conditions using the 12-230 kDa separation system.



Western Blot: MAT1/2A Antibody TA301494 - Detection of MAT2A in HepG2 whole cell lysates using TA301494.