

Product datasheet for **TA301493**

MAT2A Rabbit Polyclonal Antibody

Product data:

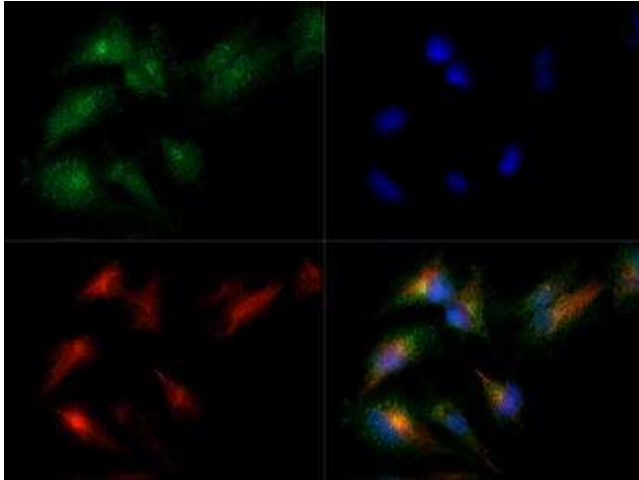
Product Type:	Primary Antibodies
Applications:	ICC/IF, IHC, IP, Simple Western, WB
Recommended Dilution:	Simple Western, Western Blot: 1.0 ug/ml, Immunocytochemistry/ Immunofluorescence: 1:2000, Immunohistochemistry: 1:200, Immunohistochemistry-Paraffin: 1:200, Immunoprecipitation
Reactivity:	Human, Rat, Bovine, Zebrafish, Monkey, Orang-Utan (Does not react with: Mouse)
Host:	Rabbit
Isotype:	IgG
Clonality:	Polyclonal
Immunogen:	Synthetic peptide made to an N terminal portion of the human protein (within residues 1-100). [Swiss-Prot# P31153]
Formulation:	PBS, 30% glycerol and 0.1% sodium azide
Concentration:	lot specific
Purification:	peptide affinity purified
Conjugation:	Unconjugated
Storage:	Store at -20°C as received.
Stability:	Stable for 12 months from date of receipt.
Gene Name:	methionine adenosyltransferase 2A
Database Link:	NP_005902 Entrez Gene 171347 RatEntrez Gene 232087 MouseEntrez Gene 695362 MonkeyEntrez Gene 4144 Human P31153
Background:	MAT1A and MAT2A are catalytic subunits of methionine adenosyltransferase (MAT), which catalyzes the formation of S-adenosyltransferase for methionine catabolism. Inactivation of MAT1A has been linked to liver disease. In addition, in certain liver cancers expression of MAT1A is replaced by expression of MAT1B. Overexpression of MAT2A has also been observed in colon cancer, leading to the proposal that MAT2A facilitates cancer cell growth.
Synonyms:	MATA2; MATII; SAMS2



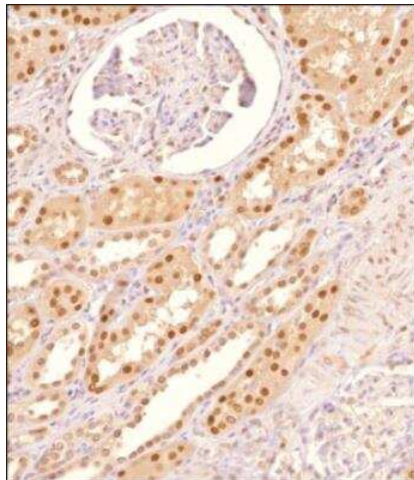
[View online »](#)

Protein Pathways: Cysteine and methionine metabolism, Metabolic pathways, Selenoamino acid metabolism

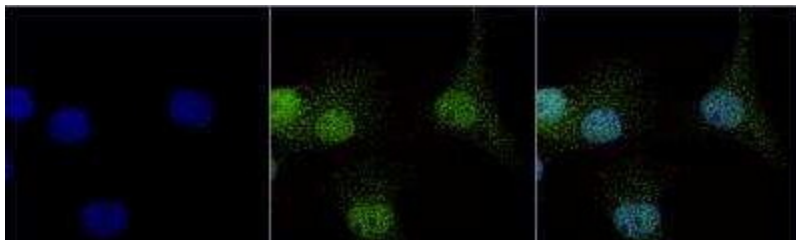
Product images:



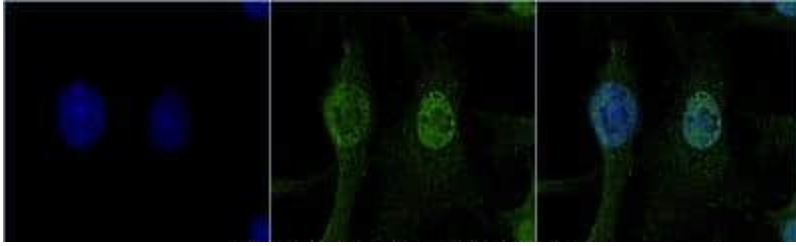
Immunocytochemistry/Immunofluorescence: MAT2A Antibody TA301493 - MAT2A antibody was tested in HepG2 cells with DyLight 488 (green). Nuclei and alpha-tubulin were counterstained with DAPI (blue) and DyLight 550 (red).



Immunohistochemistry-Paraffin: MAT2A Antibody TA301493 - Analysis of a FFPE tissue section of human kidney using 1:200 dilution of MAT2A antibody (TA301493). The staining was developed using HRP labeled anti-rabbit secondary antibody and DAB reagent, and nuclei of cells were counter-stained with hematoxylin.



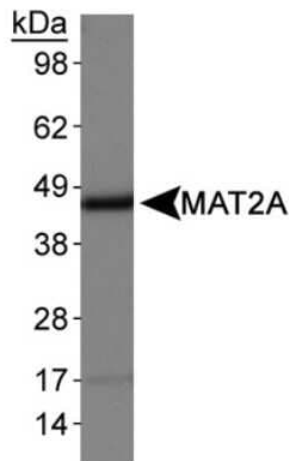
Immunocytochemistry/Immunofluorescence: MAT2A Antibody TA301493 - PC12 cells were fixed in 4% paraformaldehyde for 10 minutes and permeabilized in 0.05% Triton X-100 in PBS for 5 minutes. The cells were incubated with anti-MAT2A Antibody (TA301493) at 1 ug/ml overnight at 4C and detected with an anti-rabbit DyLight 488 (Green) at a 1:1000 dilution for 60 minutes. Nuclei were counterstained with DAPI (Blue). Cells were imaged using a 100X objective and digitally deconvolved.



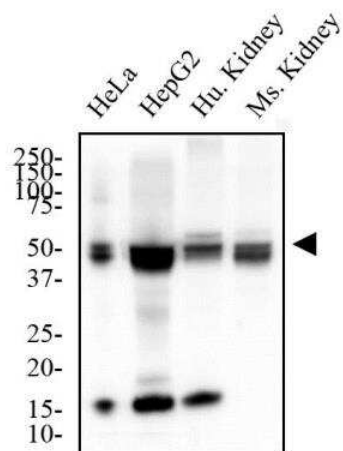
Immunocytochemistry/Immunofluorescence: MAT2A Antibody TA301493 - HepG2 cells were fixed in 4% paraformaldehyde for 10 minutes and permeabilized in 0.05% Triton X-100 in PBS for 5 minutes. The cells were incubated with anti-MAT2A Antibody (TA301493) at 1 ug/ml overnight at 4C and detected with an anti-rabbit Dylight 488 (Green) at a 1:1000 dilution for 60 minutes. Nuclei were counterstained with DAPI (Blue). Cells were imaged using a 100X objective and digitally deconvolved.



Immunocytochemistry/Immunofluorescence: MAT2A Antibody TA301493 - NIH3T3 cells were fixed in 4% paraformaldehyde for 10 minutes and permeabilized in 0.05% Triton X-100 in PBS for 5 minutes. The cells were incubated with anti-MAT2A Antibody (TA301493) at 1 ug/ml overnight at 4C and detected with an anti-rabbit Dylight 488 (Green) at a 1:1000 dilution for 60 minutes. Nuclei were counterstained with DAPI (Blue). Cells were imaged using a 100X objective and digitally deconvolved.



Western Blot: MAT2A Antibody TA301493 - Detection of MAT2A in HepG2 whole cell lysates.



Western Blot: MAT2A Antibody TA301493 - Total protein from HeLa and HepG2 cells and Human and Mouse Kidney was separated on a 12% gel by SDS-PAGE, transferred to PVDF membrane and blocked in 5% non-fat milk in TBST. The membrane was probed with 2.0 ug/mL anti-MAT2A in 1% non-fat milk in TBST and detected with an anti-rabbit HRP secondary antibody using chemiluminescence.