

## Product datasheet for **TA301491**

### LXR alpha (NR1H3) Rabbit Polyclonal Antibody

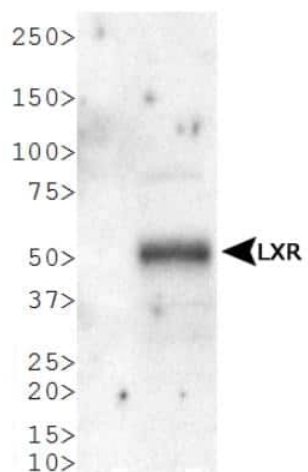
#### Product data:

|                       |   |
|-----------------------|---|
| Product Type:         | Primary Antibodies  |
| Applications:         | Simple Western, WB  |
| Recommended Dilution: | Western Blot: 0.5-2 ug/ml, Simple Western   |
| Reactivity:           | Human, Monkey   |
| Host:                 | Rabbit  |
| Isotype:              | IgG   |
| Clonality:            | Polyclonal  |
| Immunogen:            | A synthetic peptide made to an internal portion of the human LXR protein sequence (between residues 50-150).  |
| Formulation:          | Tris-glycine and 150mM NaCl and 0.05% sodium azide  |
| Concentration:        | lot specific  |
| Conjugation:          | Unconjugated  |
| Storage:              | Store at -20°C as received.   |
| Stability:            | Stable for 12 months from date of receipt.  |
| Gene Name:            | nuclear receptor subfamily 1 group H member 3   |
| Database Link:        | <a href="#">NP_005684</a><br><a href="#">Entrez Gene 713679 Monkey</a> <a href="#">Entrez Gene 10062 Human</a><br><a href="#">Q13133</a>  |
| Background:           | Liver X receptor (LXR) is a protein involved in lipid metabolism. It plays a dual role in helping the body maintain a healthy balance between fat storage and the burning of fat. |
| Synonyms:             | LXR-a; LXRA; RLD-1  |
| Protein Families:     | Druggable Genome, Nuclear Hormone Receptor, Transcription Factors   |
| Protein Pathways:     | PPAR signaling pathway  |



[View online »](#)

## Product images:



Western Blot: LXR alpha/NR1H3 Antibody  
TA301491 - WB detection of LXR in human liver.