

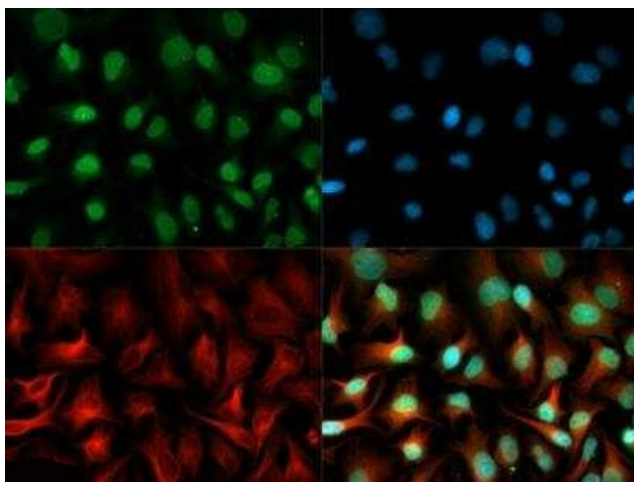
## Product datasheet for **TA301490**

### **S100A12 Rabbit Polyclonal Antibody**

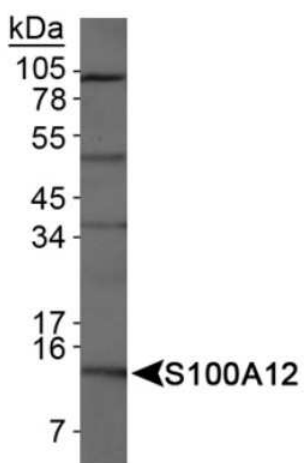
#### **Product data:**

Product Type:	Primary Antibodies
Applications:	ICC/IF, WB
Recommended Dilution:	Immunocytochemistry/ Immunofluorescence: 1:500, Western Blot: 1:1000
Reactivity:	Human (Does not react with: Mouse, Rat)
Host:	Rabbit
Isotype:	IgG
Clonality:	Polyclonal
Immunogen:	Full length human S100A12 protein [Swiss-Prot# P80511] expressed in E. coli.
Formulation:	0.1% sodium azide
Purification:	Whole antisera
Conjugation:	Unconjugated
Storage:	Store at -20°C as received.
Stability:	Stable for 12 months from date of receipt.
Gene Name:	S100 calcium binding protein A12
Database Link:	<a href="#">NP_005612</a> <a href="#">Entrez Gene 6283 Human P80511</a>
Background:	S100A12 is a member of the S100 family of proteins containing 2 EF-hand calcium-binding motifs. S100 proteins are localized in the cytoplasm and/or nucleus of a wide range of cells, and involved in the regulation of a number of cellular processes such as cell cycle progression and differentiation. S100A12 is proposed to be involved in specific calcium-dependent signal transduction pathways and its regulatory effect on cytoskeletal components may modulate various neutrophil activities. S100A12 is also a ligand for RAGE. Interaction with RAGE on mononuclear phagocytes, lymphocytes and endothelium triggers cellular activation. Nuclear factor kappa B, a key transcription factor for inflammatory events, is activated by S100A12/RAGE. S100A12 has also been shown to have anti-microbial properties.
Synonyms:	CAAF1; CAGC; CGRP; ENRAGE; MRP-6; MRP6; p6

[View online »](#)

**Product images:**


Immunocytochemistry/Immunofluorescence:  
S100A12 Antibody TA301490 - S100A12 antibody  
was tested in HeLa cells with Dylight 488 (green).  
Nuclei and alpha-tubulin were counterstained  
with DAPI (blue) and Dylight 550 (red).



Western Blot: S100A12 Antibody TA301490 -  
Detection of S100A12 in HeLa whole cell extracts.