

Product datasheet for **TA301487**

XRCC3 Mouse Monoclonal Antibody [Clone ID: 10F1/6]

Product data:

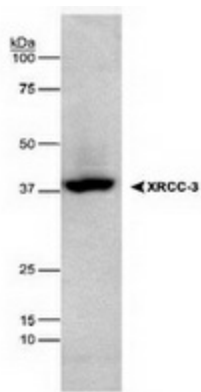
Product Type:	Primary Antibodies
Clone Name:	10F1/6
Applications:	WB
Recommended Dilution:	WB: 1: 1000
Reactivity:	Human (Does not react with: Mouse)
Host:	Mouse
Isotype:	IgG1, kappa
Clonality:	Monoclonal
Immunogen:	His-tagged human XRCC3, over-expressed in E. coli
Formulation:	PBS, pH 7.4, 0.1% sodium azide
Concentration:	lot specific
Purification:	Protein A purified
Conjugation:	Unconjugated
Storage:	Store at -20°C as received.
Stability:	Stable for 12 months from date of receipt.
Gene Name:	X-ray repair complementing defective repair in Chinese hamster cells 3
Database Link:	NP_005423 Entrez Gene 74335 Mouse Entrez Gene 7517 Human O43542
Background:	Five human RAD51 homologs have been identified: XRCC2, XRCC3, RAD51B, RAD51C, and RAD51D. Each of these homologs interacts with one or more of the others, with all of the proteins involved in one complex or multiple smaller complexes. XRCC3 (x-ray cross complementing) was first identified as a human gene complementing the DNA damage sensitivity, chromosomal instability and impaired growth of the mutant hamster cell line irs1SF. This fact coupled with XRCC3 being a member of the RAD51 gene family have implied a role in the repair of DNA damage by homologous recombination.
Synonyms:	CMM6

[View online »](#)

Protein Families: Druggable Genome

Protein Pathways: Homologous recombination

Product images:



XRCC3 detected in HEK293 lysates using a 1:1,000 dilution