

Product datasheet for **TA301484**

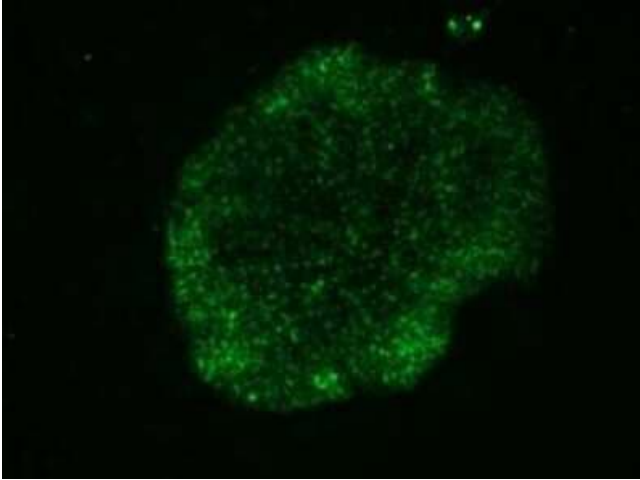
PODXL Mouse Monoclonal Antibody [Clone ID: TRA-1-60(R)]

Product data:

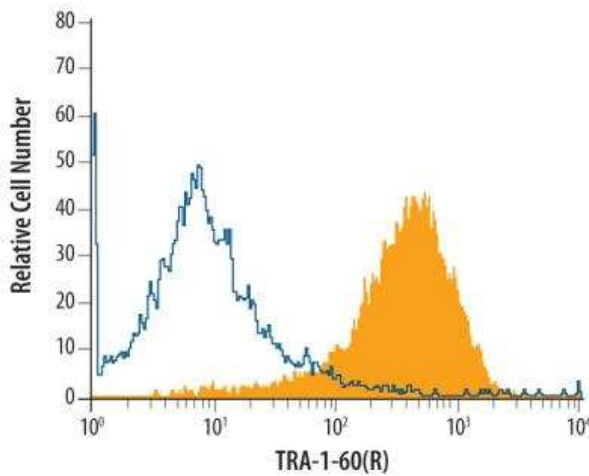
Product Type:	Primary Antibodies
Clone Name:	TRA-1-60(R)
Applications:	ELISA, FC, ICC/IF, IHC, IP, WB
Recommended Dilution:	Immunocytochemistry/ Immunofluorescence: 1:50-1:200, Immunoprecipitation: 1:10-1:500, Western Blot: 1:100-1:2000, ELISA, Immunohistochemistry-Paraffin, Flow Cytometry: 1:50-1:200, Immunohistochemistry: 1:50-1:200
Reactivity:	Human
Host:	Mouse
Isotype:	IgM
Clonality:	Monoclonal
Immunogen:	Human embryonal carcinoma cell line 2102Ep.
Formulation:	Tris-glycine, 150 mM NaCl, 0.05% sodium azide
Concentration:	lot specific
Purification:	IgM purified
Conjugation:	Unconjugated
Storage:	Store at -20°C as received.
Stability:	Stable for 12 months from date of receipt.
Gene Name:	podocalyxin like
Database Link:	NP_005388 Entrez Gene 5420 Human O00592
Background:	TRA-1-60 is a cell-surface protein involved in cell differentiation. Cell surface antigens are powerful tools for characterizing the function and expression of developmentally regulated cells during both embryogenesis and oncogenesis.
Synonyms:	Gp200; PC; PCLP; PCLP-1
Protein Families:	Transmembrane



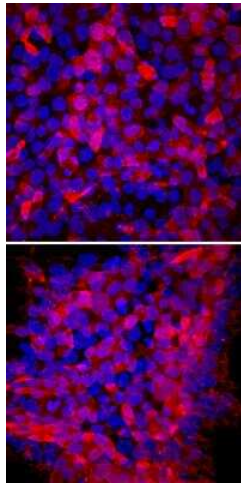
[View online »](#)

Product images:

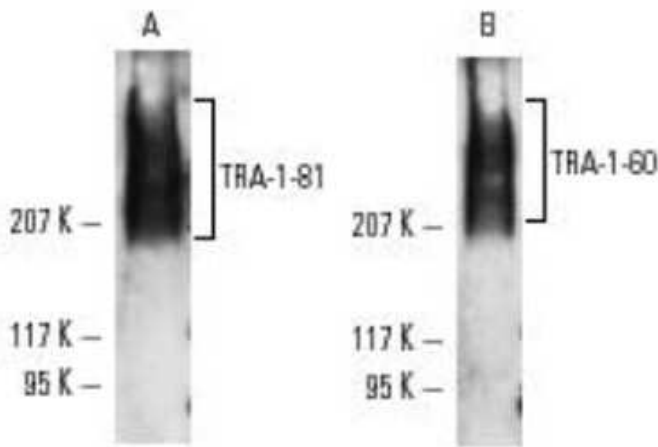
Immunocytochemistry/Immunofluorescence:
TRA-1-60 (R) Antibody (TRA-1-60(R)) TA301484 -
Human embryonic stem cells stained with TRA-1-
60 antibody (Cat# TA301484) detected with Alexa
Fluor 488 anti-mouse IgM secondary antibody.



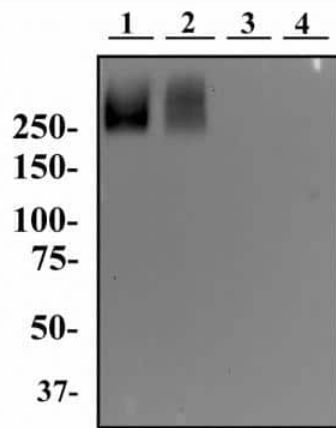
Flow Cytometry: TRA-1-60(R) Antibody (TRA-1-60)
TA301484 - BG01V human embryonic stem cells
were stained with Mouse Anti-Human TRA-1-60
Neuraminidase Resistant Epitope Monoclonal
Antibody (Catalog # TA301484, filled histogram)
or isotype control antibody followed by
Phycoerythrin-conjugated Anti-Mouse IgM
Secondary Antibody (Catalog # F0116).



Immunocytochemistry/Immunofluorescence: TRA-1-60(R) Antibody (TRA-1-60) TA301484 - TRA-1-60(R) was detected in immersion fixed ADLF1 (top panel) and FAB2 (bottom panel) induced pluripotent stem cell lines using Mouse Anti-Human TRA-1-60(R) Neuraminidase Resistant Epitope Monoclonal Antibody (Catalog # TA301484) at 10 ug/mL for 3 hours at room temperature. Cells were stained using an Anti-Mouse IgG Secondary Antibody (red) and counterstained with DAPI (blue). Specific staining was localized to cell surfaces.



Western Blot: TRA-1-60 (R) Antibody (TRA-1-60(R)) TA301484 - Analysis of TA301484 expression in NTERA-2 cl.D1 whole cell lysate.



Western Blot: TRA-1-60 (R) Antibody (TRA-1-60(R)) TA301484 - Whole cell protein from human ES cells (lane 1), human NTERA-2 cells (lane 2), mouse embryonic fibroblasts (MEF, lane 3) and mouse V6.5 ES cells (lane 4, NBP1-97433) were separated on a 7.5% gel and transferred to PVDF membrane. The membrane was then incubated with anti-TRA1-60(R) antibody at 2 ug/ml and detected with an anti-mouse IgM secondary antibody using chemiluminescence. Note how this antibody specifically detects the TRA1-60(R) epitope only on human cells.