

Product datasheet for **TA301480**

BAP1 Mouse Monoclonal Antibody [Clone ID: 1G8]

Product data:

Product Type:	Primary Antibodies
Clone Name:	1G8
Applications:	FC, WB
Recommended Dilution:	Western Blot: 2 ug/ml, Flow Cytometry: 1 ug per million cells
Reactivity:	Human
Host:	Mouse
Isotype:	IgG1, kappa
Clonality:	Monoclonal
Immunogen:	Full-length human BAP1 protein expressed and purified from E.coli. [Uniprot# Q92560]
Formulation:	Tris-glycine, 150mM NaCl and 0.05% sodium azide
Purification:	protein G purified
Conjugation:	Unconjugated
Storage:	Store at -20°C as received.
Stability:	Stable for 12 months from date of receipt.
Gene Name:	BRCA1 associated protein 1
Database Link:	NP_004647 Entrez Gene 8314 Human Q92560



[View online »](#)

Background:

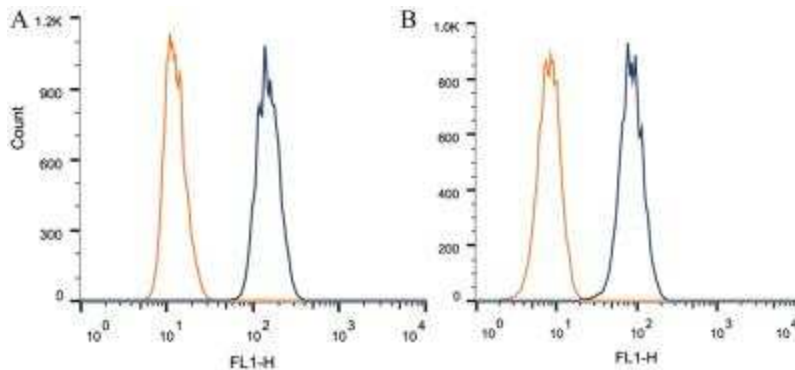
Mutations within the BRCA1 gene, localized to chromosome 17q, are believed to account for approximately 45% of families with increased incidence of both early-onset breast cancer and ovarian cancer. The BRCA1 gene is expressed in numerous tissues, including breast and ovary, and encodes a predicted protein of 1863 amino acids. This protein contains a RING domain near the N-terminus and appears to encode a tumor suppressor. BARD1 (BRCA1-associated RING domain protein 1) and BAP1 (BRCA1-associated protein 1) have both been shown to bind to the N-terminus of BRCA1 and are potential mediators of tumor suppression. BARD1 contains an N-terminal RING domain and three tandem ankyrin repeats. The C-terminus of BARD1 contains a region with sequence homology to BRCA1, termed the BRCT domain. BAP1 is a ubiquitin hydrolase and has been shown to enhance BRCA1-mediated cell growth suppression.

Synonyms:

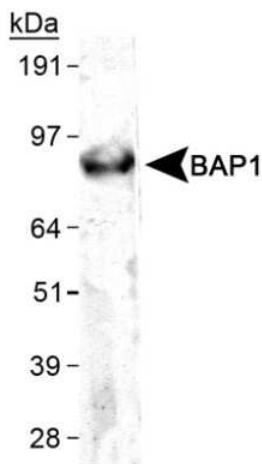
hucep-6; HUCEP-13; UCHL2

Protein Families:

Druggable Genome, Protease

Product images:


Flow Cytometry: BAP1 Antibody (1G8) TA301480 - Intracellular flow cytometric staining of 1×10^6 CHO (A) and HEK-293 (B) cells using BAP1 antibody (dark blue). Isotype control shown in orange. An antibody concentration of $1 \mu\text{g}/1 \times 10^6$ cells was used.



Western Blot: BAP1 Antibody (1G8) TA301480 - Detection of BAP1 in HeLa WCE.