

Product datasheet for **TA301478**

Eg5 (KIF11) Rabbit Polyclonal Antibody

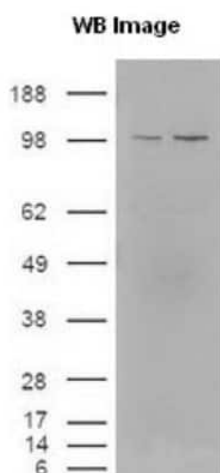
Product data:

Product Type:	Primary Antibodies
Applications:	ICC/IF, Immunoblotting, IP, WB
Recommended Dilution:	Immunoblotting, Immunocytochemistry/ Immunofluorescence: 1:1000, Immunoprecipitation: 1:10-1:500, Western Blot: 1:1000
Reactivity:	Human, Mouse, Bovine, Goat, Hamster, Sheep
Host:	Rabbit
Isotype:	IgG
Clonality:	Polyclonal
Immunogen:	Produced by immunization of rabbits with a recombinant segment of the coiled-coil domain of the human protein.
Purification:	Whole antisera
Conjugation:	Unconjugated
Storage:	Store at -20°C as received.
Stability:	Stable for 12 months from date of receipt.
Gene Name:	kinesin family member 11
Database Link:	NP_004514 Entrez Gene 16551 Mouse Entrez Gene 3832 Human P52732
Background:	Eg5 is a mitotic motor protein required for bipolar spindle formation. The mitotic spindle is crucial for chromosome segregation during cell division.
Synonyms:	EG5; HKSP; KNSL1; MCLMR; TRIP5
Protein Families:	Druggable Genome

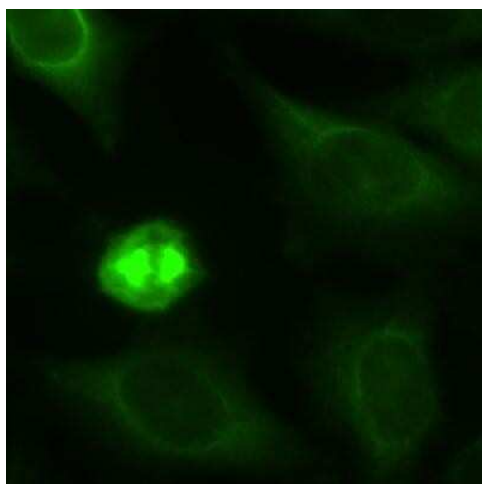


[View online »](#)

Product images:



Western Blot: Eg5 Antibody TA301478 - Cells were transfected with the pCMV6-ENTRY control or pCMV6-ENTRY KIF11 cDNA for 48 hrs and lysed. Equivalent amounts of cell lysates (5 ug per lane) were separated by SDS-PAGE and immunoblotted with anti-Eg5.



Immunocytochemistry/Immunofluorescence: Eg5 Antibody TA301478 - Staining of HeLa cells fixed in 3.5% paraformaldehyde. Cytoplasmic staining during interphase and spindle staining during mitosis.